
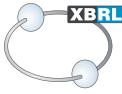
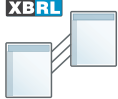





Altova MissionKit is an integrated suite of enterprise-class tools for end-to-end XBRL development, analysis, reporting, and automation.

					
<b>XBRL Validation</b>	<b>XBRL Taxonomy Creation</b>	<b>XBRL Mapping</b>	<b>XBRL Automation</b>	<b>XBRL Analysis</b>	<b>XBRL Rendering</b>

- Support for XBRL, XBRL Dimensions, XBRL Formula, XBRL Table Linkbase and more
- Validation of XBRL taxonomies and XBRL instance files
- XBRL Taxonomy Wizard
- Graphical XBRL Taxonomy editing
- Advanced charting with XBRL Chart Wizard
- Support for iXBRL
- XBRL documentation generation
- Mapping XBRL data to/from XML, databases, flat files, Excel, and Web services
- XPath filtering for rendering dimensional data
- XBRL report generation for HTML, PDF, and more
- Integration with Visual Studio® and Eclipse IDEs
- Automation via RaptorXML+XBRL Server

Supported databases:
◦ Firebird 2.5, 3
◦ IBM DB2 for iSeries® v6.1, 7.1
◦ IBM DB2® 8, 9, 9.5, 9.7, 10.1, 10.5
◦ Informix® 11.70, 12.10
◦ MariaDB 10, 10.3
◦ Microsoft Access™ 2003, 2007, 2010, 2013
◦ Microsoft® Azure SQL
◦ Microsoft® SQL Server® 2005, 2008, 2012, 2014, 2016, 2017
◦ MySQL® 5, 5.1, 5.5, 5.6, 5.7, 8
◦ Oracle® 9i, 10g, 11g, 12c
◦ PostgreSQL 8, 9.0.10, 9.1.6, 9.2.1, 9.4, 9.6, 10
◦ Progress OpenEdge 11.6
◦ SQLite 3.x
◦ Sybase® ASE 15, 16
◦ Teradata 16

Altova MissionKit supports extending industry-standard XBRL taxonomies, mapping back-end SQL database data to the taxonomy to create a valid XBRL instance for filing, and processing and publishing that same data in Web or print output formats.



Ease into XBRL compliance with the complete set of tools from Altova – Download a free, 30-day trial of MissionKit at [www.altova.com](http://www.altova.com)

Altova MissionKit includes XMLSpy, MapForce, StyleVision and other tools for working with XBRL – conveniently sold together at an attractive price.



### Validation and Taxonomy Editing

- XBRL validation powered by RaptorXML
- Graphical XBRL Taxonomy editor
- Support for XBRL 2.1 and XBRL Dimensions
- XBRL Table Linkbase editing and generation
- XBRL Formula editing and execution
- Context-sensitive XBRL tabs and entry helpers
- XBRL Taxonomy Wizard for extending US-GAAP or IFRS
- Find-in-XBRL functionality
- XBRL taxonomy documentation generation



### XBRL Mapping

- Mapping XBRL data to/from XML, databases, flat files, Excel, JSON, & Web services\* Intuitive icons to define XBRL components and facts
- Instant data transformation
- Advanced data processing functions
- Deploy to MapForce Server to automate XBRL mapping

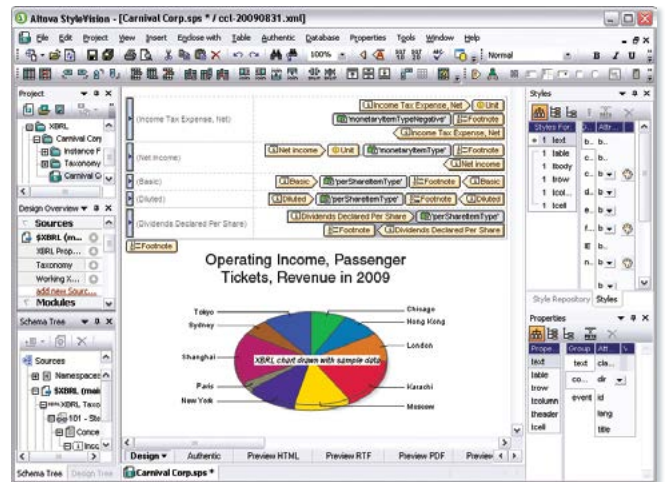
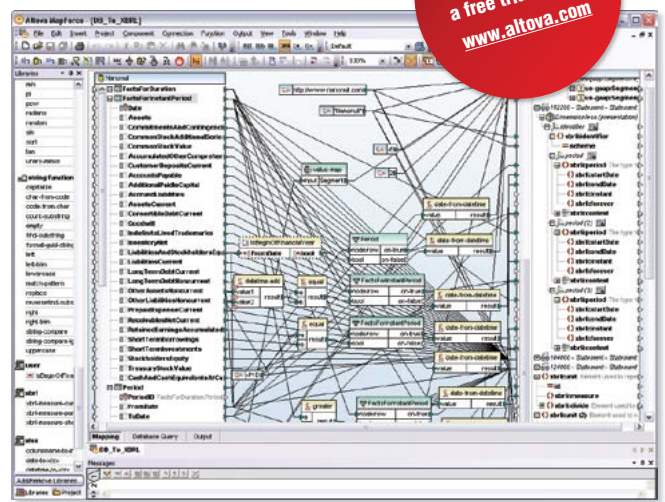
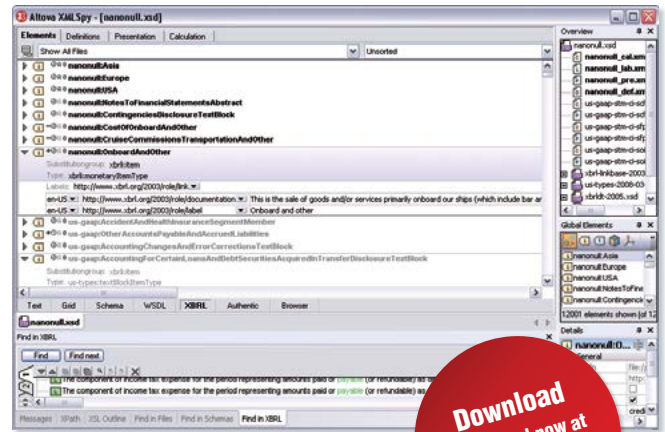
### XBRL Data Analysis

- Supports mapping data for multi-dimensional financial analysis in databases, flat files, XML, and Excel



### XBRL Rendering

- Visual drag & drop report design
- Simultaneous output in HTML, RTF, PDF, and Word
- Creates reusable design templates for periodic reports
- XBRL Table Wizard for easily customizing output structure
- Automatic structuring option for US-GAAP
- Generates iXBRL based on XBRL instance files
- XBRL Chart Wizard for visualization components
- XPath filtering with entry helpers for rendering dimensional data
- Deploy to StyleVision Server to automate XBRL rendering



Download a free trial now at [www.altova.com](http://www.altova.com)



### Free Online Training

Visit [www.altova.com](http://www.altova.com) for more information and on-demand product and technology training!



Automate XBRL validation via RaptorXML+XBRL Server, the cross-platform, hyper-performance XBRL processor optimized for today's parallel computing environments.