



Transform  
with style



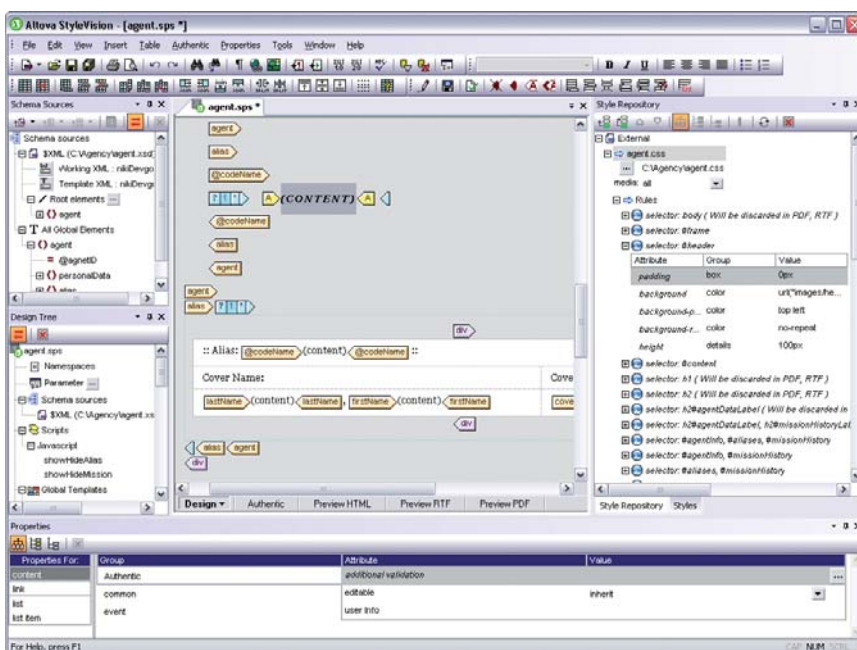
Altova® StyleVision® 2007 the ultimate visual stylesheet designer for transforming XML and database content into eye-catching HTML pages, PDF reports, Word/RTF documents, and intuitive Authentic® electronic forms. StyleVision is standards-based and supports XSLT, XSL:FO, JavaScript, CSS, and all major databases. It is optimized for single source publishing and allows multiple output styles from a single stylesheet design.

## Create Eye-Catching Output

Altova StyleVision 2007 features a unique graphical design interface for creating stylesheets to transform XML and database data into multiple output formats. Because StyleVision produces standards-conformant XSLT 1.0, XSLT 2.0, and XSL:FO style-sheets, plus HTML, Word/RTF, PDF, and Authentic form output simultaneously, based on one design, developers and designers no longer need to spend countless hours hand-coding and testing intricate stylesheets to implement single source publishing and database reporting solutions.

StyleVision 2007 supports:

- >> Single source, multi-channel publishing
- >> Publishing XML and database content in HTML, Word/RTF, and PDF
- >> Visual stylesheet design
- >> Auto-generation of standards-conformant XSLT and XSL:FO stylesheets
- >> Advanced Web page design
- >> Authentic® electronic forms design
- >> CSS styles
- >> JavaScript functions and JavaScript editing
- >> Database reporting in HTML, Word/RTF, and PDF
- >> Combining multiple XML and database sources in one design
- >> HTML-to-XML conversion
- >> Batch execution from the command line
- >> Advanced standards conformance:
  - > XSLT 1.0
  - > XSLT 2.0 (schema aware)
  - > XPath 1.0
  - > XPath 2.0
  - > XSL:FO
  - > Industry templates (DocBook, DITA, etc.)



StyleVision user interface and main design window

## Visual Stylesheet Design

Writing even the simplest transformation stylesheets manually is a difficult, time-consuming process. It requires an understanding of XSL elements, the XPath language, and complicated rules-based document processing models. StyleVision 2007 abstracts away the tricky underlying syntax, allowing you to write stylesheets using a visual design interface, which is easier to learn, takes considerably less time, reduces the occurrence of errors, and lets you focus on the creativity of your design. The designs you create in StyleVision can be based on any DTD, XML Schema, or relational database, and multiple sources are supported. For instance, you can create one design that includes data from both XML and database sources. For each design you create, StyleVision auto-generates the following:

- >> XSLT 1.0 or 2.0 stylesheet for HTML
- >> Word/RTF document
- >> XSLT 1.0 or 2.0 stylesheet for Word/RTF
- >> PDF document
- >> XSL:FO stylesheet for PDF
- >> Authentic® electronic Form
- >> HTML Web page

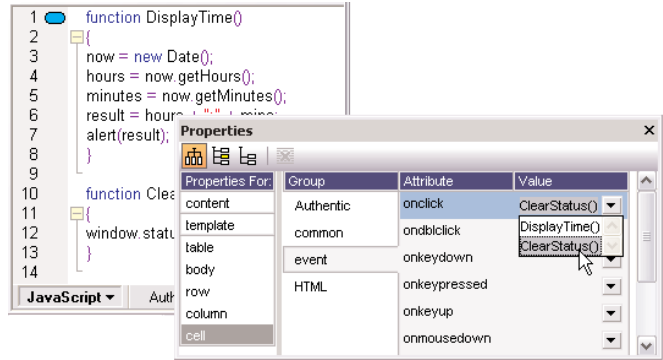
The unified design approach promoted by StyleVision allows you to implement true single source publishing, since one, easy-to-create design simultaneously produces HTML, PDF, Word/RTF, and electronic form output. When your source data changes, the HTML, PDF, and Word output can be updated simultaneously with the click of a button.

## Advanced Styles and Functions

Applying eye-catching styles and advanced functionality to your designs is easy with the StyleVision drag-and-drop design process and intelligent entry-helpers. To create a design, you simply drag elements from your data source(s) on to the design pane, and StyleVision prompts you to select an option for rendering the content. You can insert static content, such as headers, images, etc., directly into your design, then drag and drop elements from XML and/or database sources that will be rendered dynamically based on the source data. To help you apply layout and style information to the content in your design, StyleVision includes multiple advanced entry-helper windows and dialog boxes for viewing and editing source elements and styles. Design styles can be applied using drag-and-drop functionality and by editing properties directly in the entry helpers.

For HTML Web page design, StyleVision supports all the elements found on today's advanced Web pages, including hyperlinks, CSS (cascading stylesheets), JavaScript functions, and more. It even includes a JavaScript editor for defining functions that add dynamic, event-based functionality to your HTML pages.

StyleVision 2007 allows you to apply CSS styles on a local or global basis using drop-down menus and dialog boxes, and you can also import an external CSS stylesheet to apply rules you've previously created to your StyleVision design.



JavaScript editor and event handler

CSS styles will be applied to your HTML output, and most will translate to Word/RTF and PDF output, as well. Additional formatting considerations for print media such as page numbering, headers and footers, etc., are available for application to RTF and PDF output.

In addition to defining advanced style and layout guidelines, StyleVision allows you to design stylesheets and Authentic forms that support advanced functions such as complex table handling, rich input formatting, business logic validation, date control, and more.



All these features combined with the ease of visual, drag-and-drop design make StyleVision an invaluable tool for Web developers and others who need to publish XML and database data in online and print media.

Previewing HTML output with advanced CSS and JavaScript elements

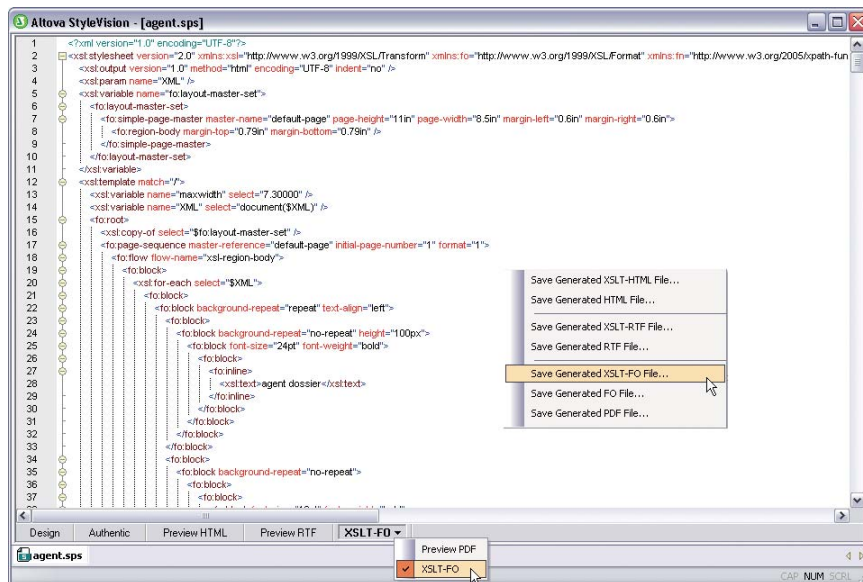
## Database Report Generation

Because StyleVision 2007 allows you to base your design on a relational database (in addition to a DTD or XML Schema), it's easy to design database reports with output to HTML, PDF, and Word/RTF quickly and easily.

## Standards-conformant Stylesheet Creation

Based on your visual design, StyleVision 2007 auto-generates multiple transformation stylesheets to convert your XML and database data to HTML, Word/RTF, and PDF. StyleVision 2007 supports XSLT 1.0 and XSL:FO, plus the powerful new XSLT 2.0 stylesheet specification. XSLT 2.0 support is schema-aware, providing additional mechanisms for error isolation and enhanced code performance. Based on your choice of XSLT 1.0 or 2.0, StyleVision auto-generates the XSLT code and XPath 1.0 or 2.0 selectors required to build your stylesheets. This automated design approach speeds stylesheet creation and all but negates the occurrence of errors.

At any time during the design process, you can view and save the XSLT and XSL:FO stylesheets that are built behind the scenes based on your design. Since they are standards-based, you can use these stylesheets in other applications as necessary.



Viewing and saving auto-generated stylesheets and output

## Supported databases:

- >> Microsoft® Access®
- >> Microsoft® SQL Server
- >> MySQL®
- >> Oracle®
- >> IBM DB2®
- >> Any ADO database

## HTML to XML Conversion

To leverage existing Web content, StyleVision 2007 includes a handy HTML importer for converting HTML to XML. Using easy drag-and-drop functionality, you can quickly convert an HTML page to an XML Schema, XSLT 1.0 or 2.0 stylesheet, and XML instance document. This feature adds extensibility to your current HTML content, which can now be used in XML-based applications and output in PDF, Word/RTF, and Authentic form formats, as well.

## Authentic Form Creation

In addition to rendering attractive HTML, PDF, and Word/RTF output, each design you create in StyleVision can also produce an Authentic form for use with Altova Authentic 2007.

Authentic 2007 is a free XML and database content editor that allows non-technical business users to view and edit data in XML documents and relational databases. They simply fill in electronic forms created in StyleVision, and their content or query is automatically written to or run against an XML document or relational database behind the scenes.

In addition, because your design also simultaneously produces XSLT and XSL:FO stylesheets along with the Authentic form, you can output the data entered through the form directly to HTML, PDF, and Word/RTF without having to design additional stylesheets.

More about Authentic 2007 is included on the following page.

## StyleVision Ordering Information

StyleVision 2007 is available in Enterprise and Professional Editions. It is supported on Windows NT, 2000, and XP.

You may download a free 30-day trial of StyleVision 2007 at [www.altova.com/download](http://www.altova.com/download).

To purchase a permanent license please visit the Altova Online Shop at [shop.altova.com](http://shop.altova.com).



StyleVision 2007 is also available as part of the specially priced Altova XML Suite 2007, a compelling set of the world's leading XML development tools. The Altova Enterprise XML Suite 2007 includes Enterprise Editions of Altova XMLSpy®, MapForce®, and StyleVision®, plus SemanticWorks™, SchemaAgent™, and DiffDog®. The Altova Professional XML Suite 2007 includes Professional Editions of Altova XMLSpy, MapForce, and StyleVision.



Recognize  
real value

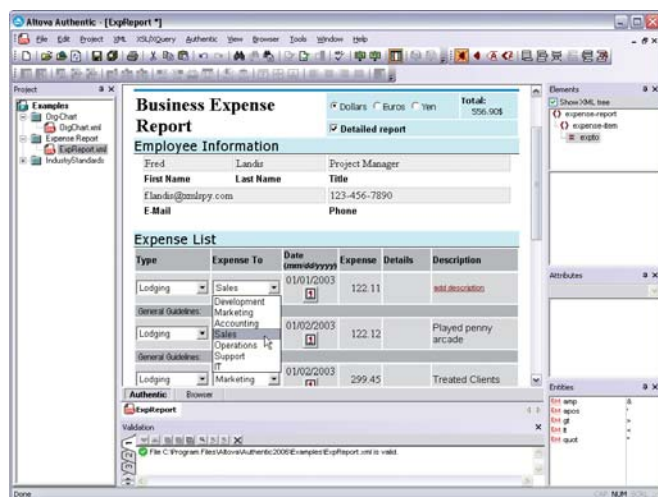


Altova® Authentic® 2007 is a FREE content editor that allows business users to view and edit data in XML documents and relational databases without being exposed to the underlying technology. They simply fill in electronic forms using the word processor style interface, and their content or query is instantly processed. Authentic 2007 is ideally suited as the user interface element of XML-based document frameworks and management-oriented databases.

## Unlock Corporate Knowledge

Altova Authentic 2007 offers an innovative approach to XML and database content editing that completely shields the end user from the underlying technology. Authentic presents non-technical users with electronic forms that allow them to view and enter valid XML or database data using intuitive, WYSIWYG forms. These electronic Authentic forms are created by designers using Altova StyleVision 2007.

Authentic forms can be based on any DTD, XML Schema, or relational database. And, since Authentic is available under a free license, you can distribute the Authentic forms you create in StyleVision to as many end users as required at no additional cost.



Editing an Authentic form in Authentic Desktop Edition

Authentic 2007 is available in free Desktop and Browser Editions in both English and German language versions. It is supported on Windows NT, 2000, and XP. You may download a free copy of Authentic at [www.altova.com/download](http://www.altova.com/download).

## About Altova

Altova accelerates application development and data management projects with software and solutions that enhance productivity and maximize results. As an innovative, customer-focused company and the creator of XMLSpy and other leading XML, data management, UML, and Web services tools, Altova is the choice of over 2.5 million clients worldwide, including virtually every Fortune 500 company. Enabling customers ranging from vast development teams in the world's largest organizations to progressive one-person shops, Altova's line of software tools fulfills a broad spectrum of business needs. Altova is an active member of the World Wide Web Consortium (W3C) and Object Management Group (OMG) and is committed to delivering standards-based platform-independent solutions that are powerful, affordable, and easy to use. Altova was founded in 1992 and has headquarters in Beverly, Massachusetts and Vienna, Austria. Visit Altova on the Web at [www.altova.com](http://www.altova.com).

## XML and Database Content Editing

Authentic 2007 is available as a free download in Desktop and Browser Editions. The Desktop Edition is an independently managed client application, while the Browser Edition provides similar viewing and editing capabilities in a lightweight plug-in component that runs inside the Internet Explorer browser.

Both editions of Authentic 2007 utilize Authentic forms to support:

- >> Viewing and editing data in XML files
- >> Viewing and editing data in relational databases
- >> Real time input validation (schema-based & business-rule based)
- >> Context-sensitive entry helpers
- >> Populating combo box values at runtime
- >> Advanced time and date controls
- >> Complex tables for presenting repeating elements
- >> Dynamic form presentation based on user input
- >> Spell checking in 12 languages
- >> Built-in XML industry templates (DocBook, DITA, NewsML, etc.)
- >> Batch operations
- >> Repository and source control integration
- >> Project management features
- >> Transforming XML and database data to HTML, Word/RTF, and PDF

## Industry Template Support

In addition to supporting Authentic forms created in StyleVision 2007, Authentic 2007 includes built-in templates for saving data according to industry XML standards such as DITA (Darwin Information Typing Architecture), DocBook, NITF (News Industry Text Format), NewsML (News Markup Language), and many others. Using the Authentic templates, non-technical users can quickly edit and save data that is valid according to these widely-used schemas.