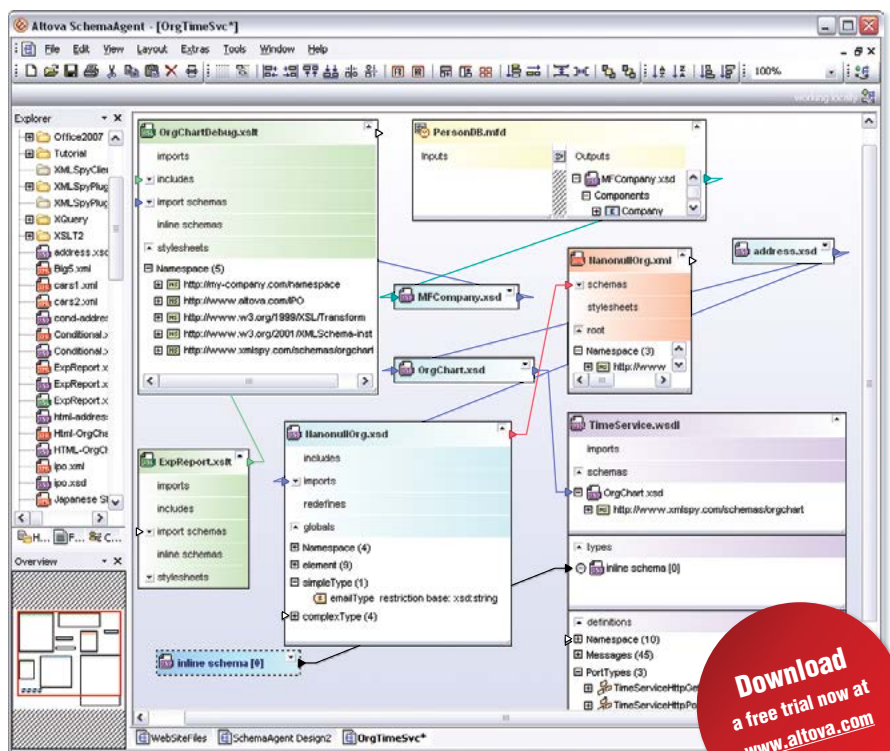


## SchemaAgent – XML File Management Tool

Altova® SchemaAgent® 2018 is a visionary tool for analyzing and managing relationships among XML Schemas, XML instance documents, XSLT files, and WSDL files, as well as viewing files used in Altova MapForce® data mapping projects – across a project, an intranet, or even an enterprise. It allows you to visualize and manage XML file relationships easily via its graphical design view, and create new relationships using drag-and-drop functionality to automatically configure imports, includes, and/or redefines (IIRs).

- Analyze XML file relationships in any repository
- Visualize files as graphical components
- View details of displayed files (IIRs, global elements, namespaces, etc.)
- Immediately identify linked, referenced & related files
- Configure IIRs graphically
- Build complex files from smaller components
- Re-use standardized components in a modular development approach
- Access schema components in XMLSpy XML Schema editor
- Print graphical representations to document information architecture
- Understand file dependencies & the impact of every change

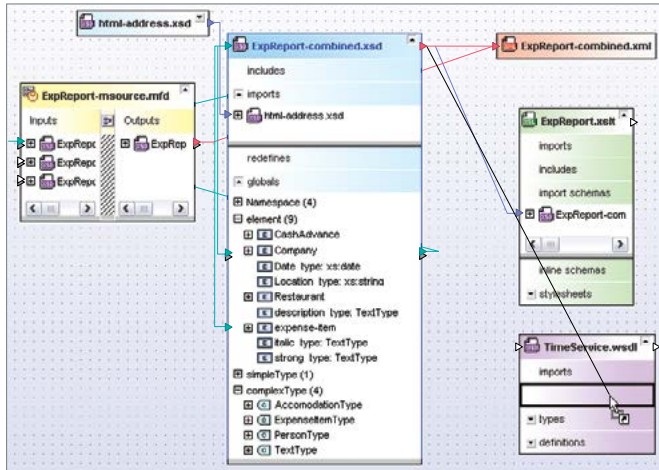
Since SchemaAgent allows you to analyze and manage your XML Schema, XSLT, and WSDL files as a pool of resources, you can easily construct complex documents from elements of files distributed about your network. This promotes the design of componentized files on which your group can standardize, and allows you to re-use existing components to reduce development times. SchemaAgent is an invaluable tool for visualizing, modeling, and reusing your XML information assets.



# SchemaAgent XML File Management Tools

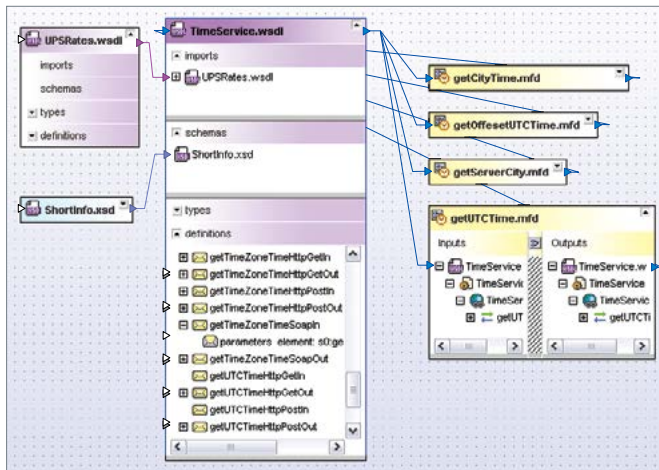
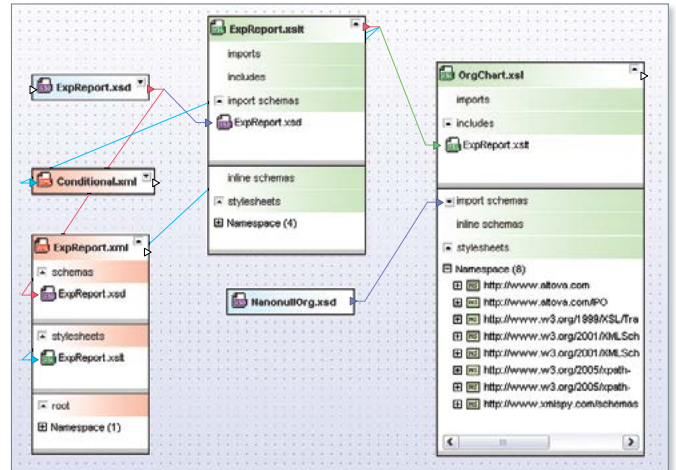
## XML Schema Management

- View XML Schemas as graphical components
- Analyze & manage related XSD, XML, XSLT, WSDL, & MapForce data mapping files
- Display XSD details: IIRs, namespaces, types, global components, etc.
- Drag & drop to manage IIRs
- Access XSDs & their components in XMLSpy's XML Schema editor
- Build complex XSDs from smaller components



## XSLT Management

- View XSLT stylesheets as graphical components
- View & manage related XSD, XSLT, & XML files
- Display XSLT details: imports, includes, schemas, namespaces, etc.
- Drag & drop to import/include XSD & XSLT files
- Build complex stylesheets from smaller components



## WSDL Management

- View WSDL files as graphical components
- View & manage related XSD, WSDL, and MapForce Web services mapping projects
- Display WSDL details: imports, types, schemas, definitions, etc.
- Drag & drop to import WSDL files or associate WSDL & XSD files



## Free Online Training

Visit [www.altova.com/training](http://www.altova.com/training) for more information and on-demand product and technology training!



**Better with MissionKit! Get SchemaAgent and other award-winning XML, SQL, and UML tools in a tightly-integrated toolkit for information architects and application developers.**