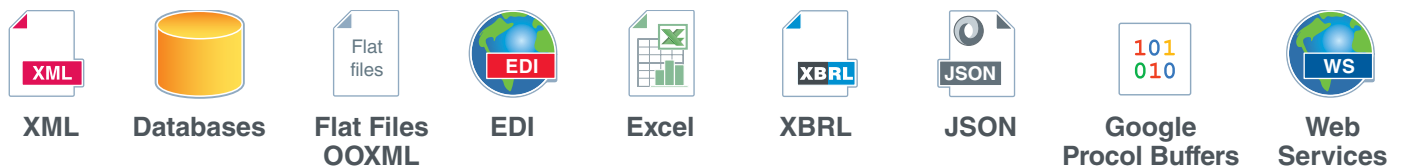


MapForce Graphical Data Mapping, Conversion & Integration Platform

Altova® MapForce® 2019 is an award-winning graphical data mapping, conversion, and integration tool from the creators of XMLSpy®. Its easy-to-use, drag-and-drop design interface allows you to map, convert, and transform data between:

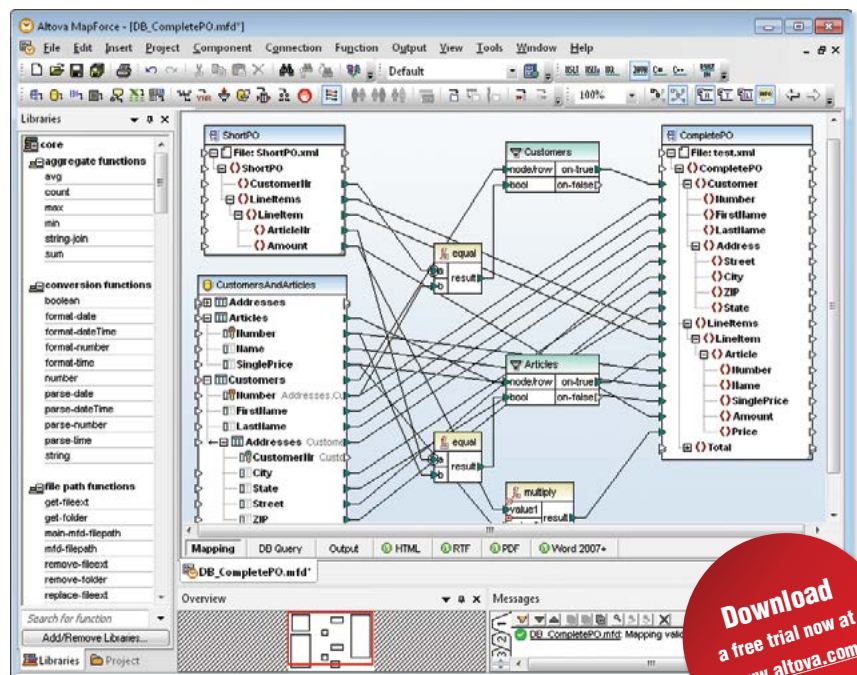


- Drag & drop data mapping & conversion
- Interactive data mapping debugger
- Instant data transformation
- Processing data from/into multiple files
- Database query window with SQL editor
- FlexText™ utility for parsing flat files
- Support for EDIFACT, X12, HL7, and SAP IDoc
- Support for XBRL 2.1 & XBRL Dimensions 1.0
- Supports JSON as input and/or output component
- Connects data to Web services
- Drag & drop Web services creation
- XSLT 1.0/2.0 and XQuery code generation
- Advanced data processing functions with visual function builder
- Chained transformations
- Deploys mappings to FlowForce Server for workflow automation
- Visual Studio & Eclipse integration

MapForce is a powerful any-to-any data integration platform. Its intuitive drag-and-drop interface lets you graphically design complex mapping and integration projects to convert between today's most prevalent data formats. Transform data instantly or automate recurring transformations. Integrates with StyleVision to render reports in HTML, RTF, PDF, and Word OOXML.

Supported databases:

- Firebird 2.5, 3
- IBM DB2 for iSeries® v6.1, 7.1
- IBM DB2® 8, 9, 9.5, 9.7, 10.1, 10.5
- Informix® 11.70, 12.10
- MariaDB 10, 10.3
- Microsoft Access™ 2003, 2007, 2010, 2013
- Microsoft® Azure SQL
- Microsoft® SQL Server® 2005, 2008, 2012, 2014, 2016, 2017
- MySQL® 5, 5.1, 5.5, 5.6, 5.7, 8
- Oracle® 9i, 10g, 11g, 12c
- PostgreSQL 8, 9.0.10, 9.1.6, 9.2.1, 9.4, 9.6, 10
- Progress OpenEdge 11.6
- SQLite 3.x
- Sybase® ASE 15, 16
- Teradata 16



Download
a free trial now at
www.altova.com

Find out what all of the buzz is about –
Download a free, 30-day trial of MapForce at www.altova.com

MapForce Data Mapping Features

Visual Function Builder

- Extensible library of data processing functions
- Filters, conditions, and other advanced functions
- Graphical function design interface
- Ability to save complex functions to automate repetitive tasks
- Using Web services as look-up functions
- Support for multi-stage data processing

Instant Output & Code Generation

Convert data instantly and view results in different formats, depending on your mapping target(s):

- XML Schemas > XML instances
- JSON Schemas > JSON instances
- Databases > SQL scripts
- Flat files > CSV or FLF
- EDI transaction sets > EDIFACT, X12, HL7 and IDoc transactions
- XBRL > XBRL financial reports
- Generate royalty-free source code for data mappings

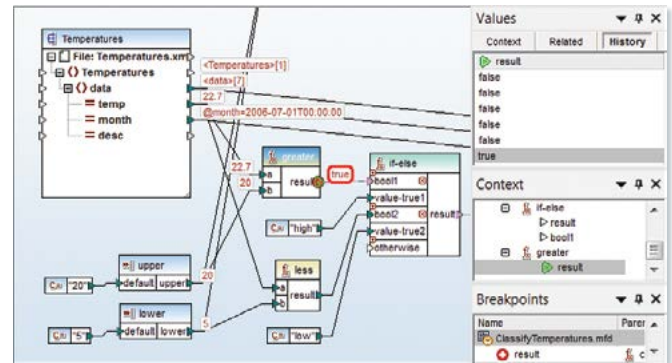
Or, automate mappings via API or ActiveX control.

Legacy Data Migration

- Support for all EDIFACT, X12, HL7, and SAP IDoc
- Support for all major relational databases
- FlexText™ utility for parsing legacy text files
- Map legacy data with XML, DBs, Excel OOXML, XBRL, JSON, Web services, etc.

Interactive Data Mapping Debugger

MapForce includes a revolutionary interactive debugger to assist with data mapping design. The debugger allows users to single step through a mapping and see the data actually flow from the sources to the target nodes step by step along the way, providing deep insight into the exact inner workings of data integration and ETL projects in a way that was never possible before.



- Set breakpoints on any input or output node
- Conditional breakpoints based on built-in MapForce functions
- All intermediate values displayed on the mapping pane
- History available for all data mapping nodes
- Debugging session includes user functions
- Multiple manual stepping options
- View partial output during debug session

MapForce Platform for Enterprise Workflow Automation

MapForce is the data mapping component of a robust platform for enterprise data integration when data mappings designed using MapForce are deployed as MapForce Server Execution files for workflow automation by Altova FlowForce Server.

FlowForce Server is available for Windows, Linux, and Mac OS platforms.



Free Online Training

Visit www.altova.com/training for more information and on-demand product and technology training!

MapForce includes all the functionality listed above and much more.



Date	Severity	Module	User	Instance	Message
2015-10-02 13:50:00	INFO	flowforce	O/davemcg	15	Finished Job execution: /public/ForEachCameraLog
2015-10-02 13:50:00	INFO	flowforce	O/davemcg	15	Starting Job execution: /public/ForEachCameraLog
2015-10-02 12:33:02	WARNING	flowforce	O/davemcg	1d	Step 1 of Job (/public/SalesQueryJob /public/SalesQueryReport.transformation) with error Tool exited with exit code 5.
2015-10-02 12:33:02	ERROR	flowforce	O/davemcg	1d	Step StyleVision.TransformationID completed with status: 5 more
2015-10-02 12:33:01	INFO	flowforce	O/davemcg	1d	Selected tool: StyleVision 2016.
2015-10-02 12:33:01	INFO	flowforce	O/davemcg	1d	Executing StyleVision.TransformationID with parameters: ("OutDoc": "OURIF", "Working-directory": "c:\salesQuery", "OutPdf": "", "Input": "c:\salesQuery\WestZonesMonthSales.xml", "OutHtml": "WestZonesSalesQueryReport.html")



Better with MissionKit! Get MapForce and other award-winning XML, SQL, and UML tools in a tightly-integrated toolkit for information architects and application developers.