

# **Altova CbC Reporting Solution**

## **Installation Guide**

## **Altova CbC Reporting Solution Installation Guide**

All rights reserved. No parts of this work may be reproduced in any form or by any means - graphic, electronic, or mechanical, including photocopying, recording, taping, or information storage and retrieval systems - without the written permission of the publisher.

Products that are referred to in this document may be either trademarks and/or registered trademarks of the respective owners. The publisher and the author make no claim to these trademarks.

While every precaution has been taken in the preparation of this document, the publisher and the author assume no responsibility for errors or omissions, or for damages resulting from the use of information contained in this document or from the use of programs and source code that may accompany it. In no event shall the publisher and the author be liable for any loss of profit or any other commercial damage caused or alleged to have been caused directly or indirectly by this document.

Published: 2019

© 2019 Altova GmbH

---

# Table of Contents

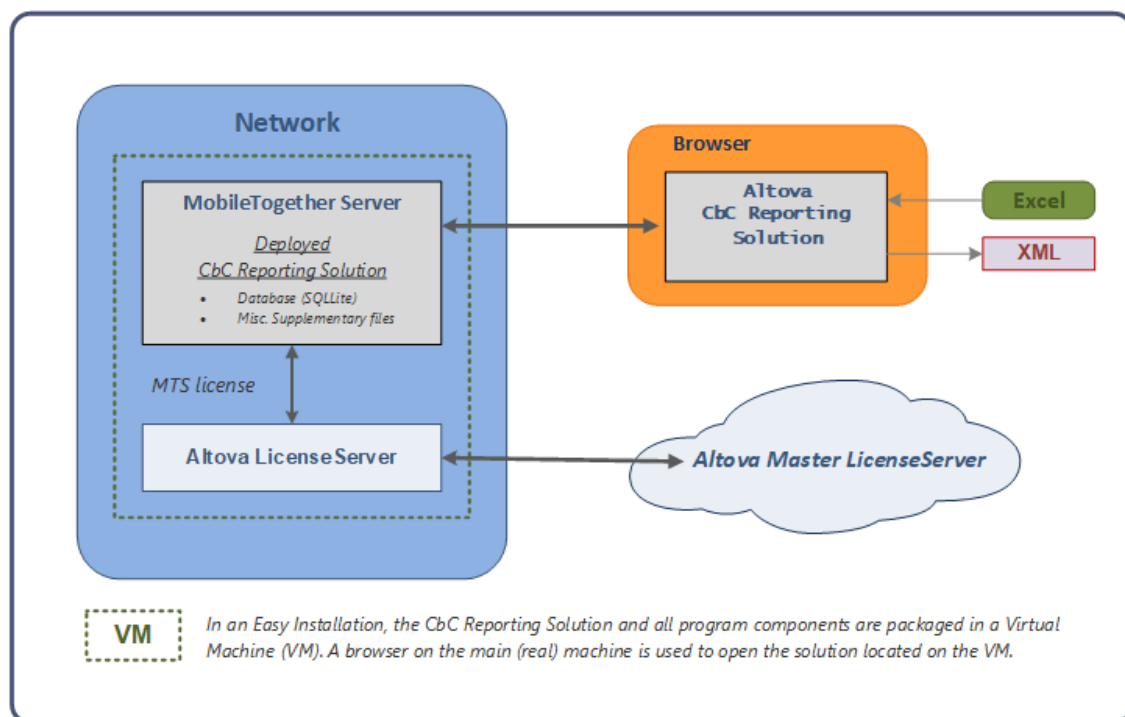
<b>1</b>	<b>Introduction</b>	<b>5</b>
<b>2</b>	<b>Standard Installation</b>	<b>7</b>
2.1	Install and License MobileTogether Designer .....	8
2.2	Install MobileTogether Server and Altova LicenseServer .....	9
2.2.1	On Windows .....	10
2.2.2	On Linux .....	13
2.2.3	On macOS .....	14
2.3	Start Altova LicenseServer .....	15
2.4	Start MobileTogether Server .....	17
2.5	Register MobileTogether Server .....	19
2.6	License MobileTogether Server .....	21
2.7	Deploy the Solution to MobileTogether Server .....	25
2.8	Start the CbCR Solution .....	28
2.9	Important Information .....	29
	<b>Index</b>	<b>31</b>



# 1 Introduction

Altova's County-by-Country Reporting Solution enables you (i) to import and edit, or directly enter, your CbC Reporting (CbCR) data in a standard browser interface, and (ii) to generate XML output that is compliant with the [OECD CbC Reporting XML Schema definition](#).

The CbC Reporting Solution is deployed to a special server—Altova's MobileTogether Server—which you can install on a machine on your network. From here, the solution can be served to a client browser. When the solution is opened in a browser, it can be used to edit and generate your CbC report in XML format. The various components of the Altova CbC Reporting Solution system are shown in the diagram below.



Also see the Altova CbC Reporting Solution webpage: <https://www.altova.com/cbc-reporting-solution>

## Two types of installations: easy and standard

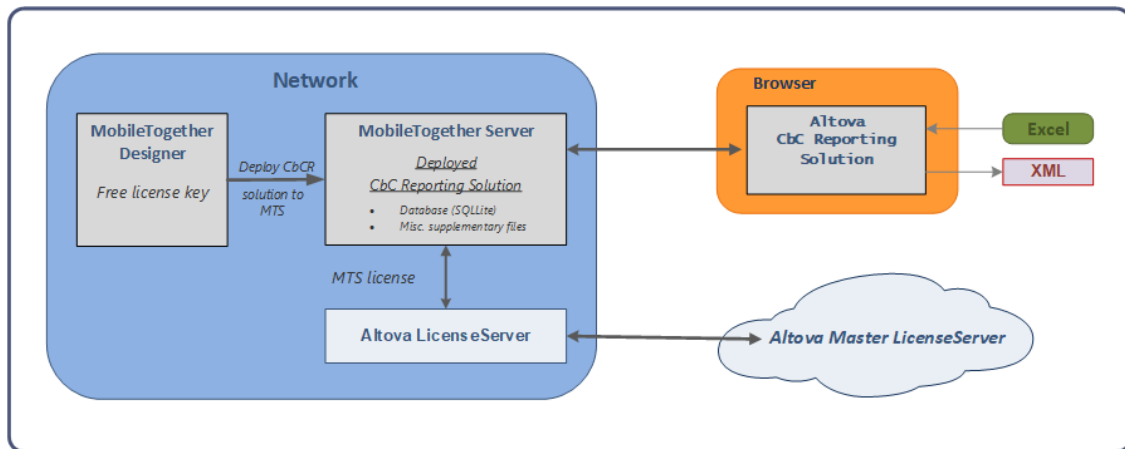
You can choose between two types of installation:

- **Easy Installation:** Download the CbCR virtual machine (CbCR VM) and open the VM in VMware Player. The VM contains MobileTogether Server and Altova LicenseServer, pre-installed and ready to use. After obtaining an Altova license, the CbC Reporting Solution can be started directly in a browser from its location on the VM. This easy installation is a quick, secure, and hassle-free way to start your CbC reporting work.
- **Standard Installation:** <sup>7</sup> Install the individual components required to run the CbC Reporting Solution separately. This way you can customize your networking and working environment to suit specific company-internal requirements.

This guide describes the [Standard Installation](#)<sup>7</sup> procedure. For information about the Easy Installation, go to the [Altova website](#) to get the guide for that installation type.

## 2 Standard Installation

In a standard installation, the CbC Reporting Solution is deployed to MobileTogether Server by MobileTogether Designer. The solution is served from MobileTogether Server to browser clients. The diagram below gives an overview of the system components and how they work together.



### Standard installation steps

Carry out the following steps to install the CbC Reporting Solution:

1. [Install Altova MobileTogether Designer](#) <sup>8</sup>. Obtain a MobileTogether Designer license, which is free of charge, and activate MobileTogether Designer.
2. Install Altova MobileTogether Server and Altova LicenseServer, and [register MobileTogether Server with LicenseServer](#) <sup>19</sup>.
3. [Obtain a license for Altova MobileTogether Server](#) <sup>21</sup>, and assign the MobileTogether Server license.
4. Open MobileTogether Designer and [deploy the CbC Reporting Solution to MobileTogether Server](#) <sup>25</sup>.
5. [Start the CbC Reporting Solution](#) <sup>28</sup>.

These steps are described in detail in the sections of this chapter.

### Altova product documentation

For more detailed information, see the respective product documentation at the [Altova website \(https://www.altova.com/\)](https://www.altova.com/).

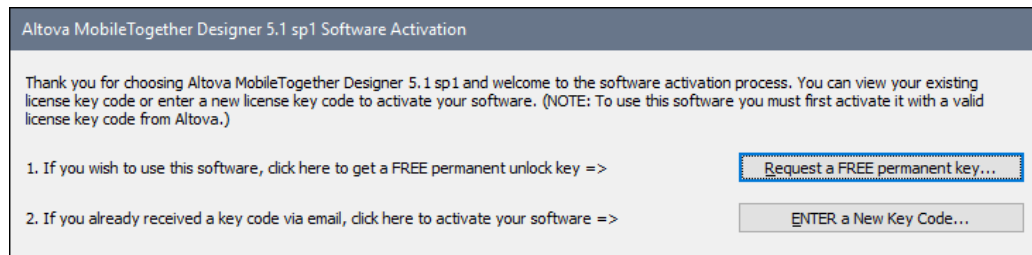
- Altova LicenseServer: <https://www.altova.com/manual/AltovaLicenseServer/>
- MobileTogether Server: <https://www.altova.com/manual/MobileTogether/mobiletogetherserver/>

## 2.1 Install and License MobileTogether Designer

Altova MobileTogether Designer is a Windows application that is needed in order to deploy Altova CbC Reporting Solution to Altova MobileTogether Server. A permanent license key for MobileTogether Designer is available free of charge.

To install MobileTogether Designer and license it, do the following:

1. Go to the [MobileTogether Designer download page \(https://www.altova.com/mobiletogether/download\)](https://www.altova.com/mobiletogether/download) to download and install the software.
2. Start MobileTogether Designer and click the menu command **Help | Software Activation**. The Software Activation dialog appears (see *screenshot below*).



3. Click **Request a Free Permanent Key**.
4. In the dialog that appears now, enter the requested information and click **Request Now**.
5. A permanent MobileTogether Designer license will be sent to the email address you entered. Save the license to a file location.
6. To license MobileTogether Designer, you can either (i) double-click the license file, or (ii) in the Software Activation dialog (*screenshot above*), click **Enter a New Key Code** and, in the New Key-code dialog that appears, copy the license details from the license email you received.



## 2.2 Install MobileTogether Server and Altova LicenseServer

Altova MobileTogether Server is licensed via Altova LicenseServer. Because of this:

- both servers need to be installed, either on the same machine or on different machines on your network, and
- MobileTogether Server must be registered with Altova LicenseServer

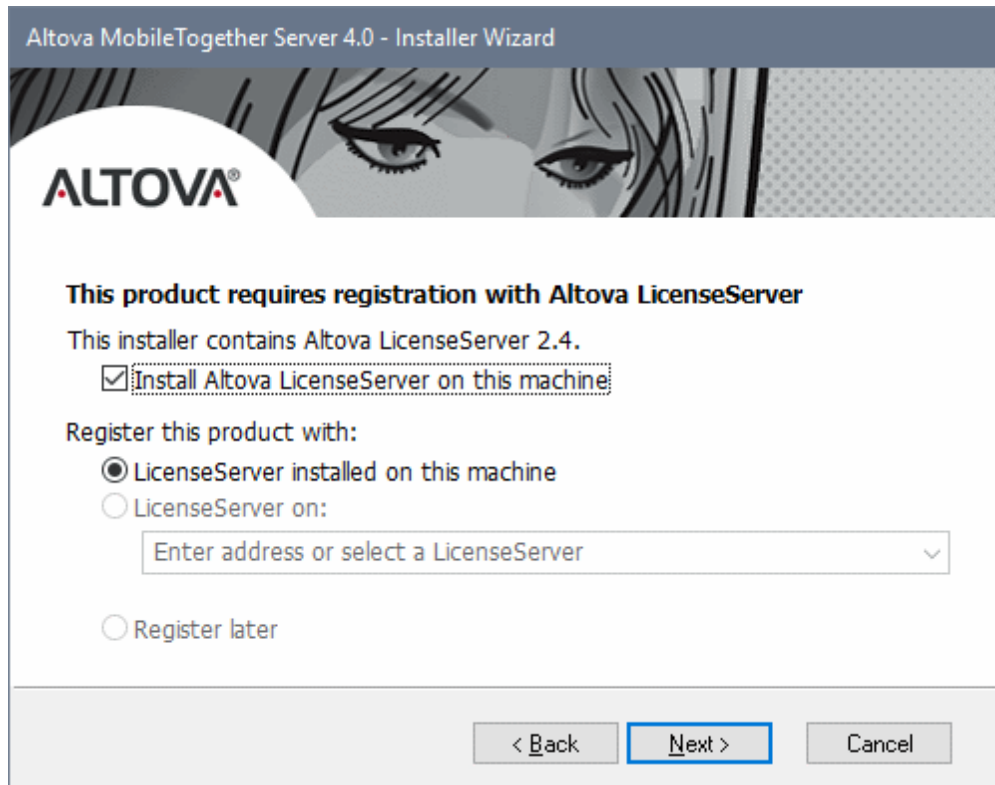
This chapter describes the installation of Altova LicenseServer and MobileTogether Server on [Windows](#)<sup>10</sup>, [Linux](#)<sup>13</sup>, and [macOS](#)<sup>14</sup>.

Subsequent chapters describe how to:

- [Start Altova LicenseServer](#)<sup>15</sup>
- [Start MobileTogether Server](#)<sup>17</sup>
- [Register MobileTogether Server with Altova LicenseServer](#)<sup>19</sup>
- [License MobileTogether Server](#)<sup>21</sup>

## 2.2.1 On Windows

When you install MobileTogether Server, the installer will inform you that you can choose to also install the corresponding Altova LicenseServer version on the same machine (see *screenshot below*). Additionally, you can choose whether you want to register MobileTogether Server during the installation process, and, if yes, then with which Altova LicenseServer on your network (see *screenshot below*).



You have two broad installation options:

- *Joint installation:* You can install MobileTogether Server and Altova LicenseServer on one and the same machine, with MobileTogether Server being registered with Altova LicenseServer during the installation process. If you want both servers on a single machine, then this is the easiest installation option.
- *Separate installations:* You can install MobileTogether Server and Altova LicenseServer separately (on the same machine or on different machines). If you want the servers on different machines, then you **must** install them separately. In the case of separate installations, it is best to install Altova LicenseServer first and start it. That way, when you install MobileTogether Server, you can register MobileTogether Server with the already-installed Altova LicenseServer (see the registration options in the MobileTogether Server Installer Wizard screenshot above).

**Note:** If you are updating your version of MobileTogether Server, then make sure that you update your Altova LicenseServer version as well (to the corresponding Altova LicenseServer version or higher).

## Download and install Altova LicenseServer

This step is required only if you are installing Altova LicenseServer on a different machine than MobileTogether Server. Otherwise, you can skip a separate installation, and instead install Altova LicenseServer during the installation of MobileTogether Server (*see next section below*).

To download and install Altova LicenseServer, do the following:

1. Go to the [LicenseServer download page](https://www.altova.com/licenseserver/download) (<https://www.altova.com/licenseserver/download>).
2. Download LicenseServer for the appropriate OS (LicenseServer is available for Windows, Linux and macOS).
3. Install LicenseServer. If you have difficulties or need detailed information, see the [appropriate Installation section of the LicenseServer documentation](#).

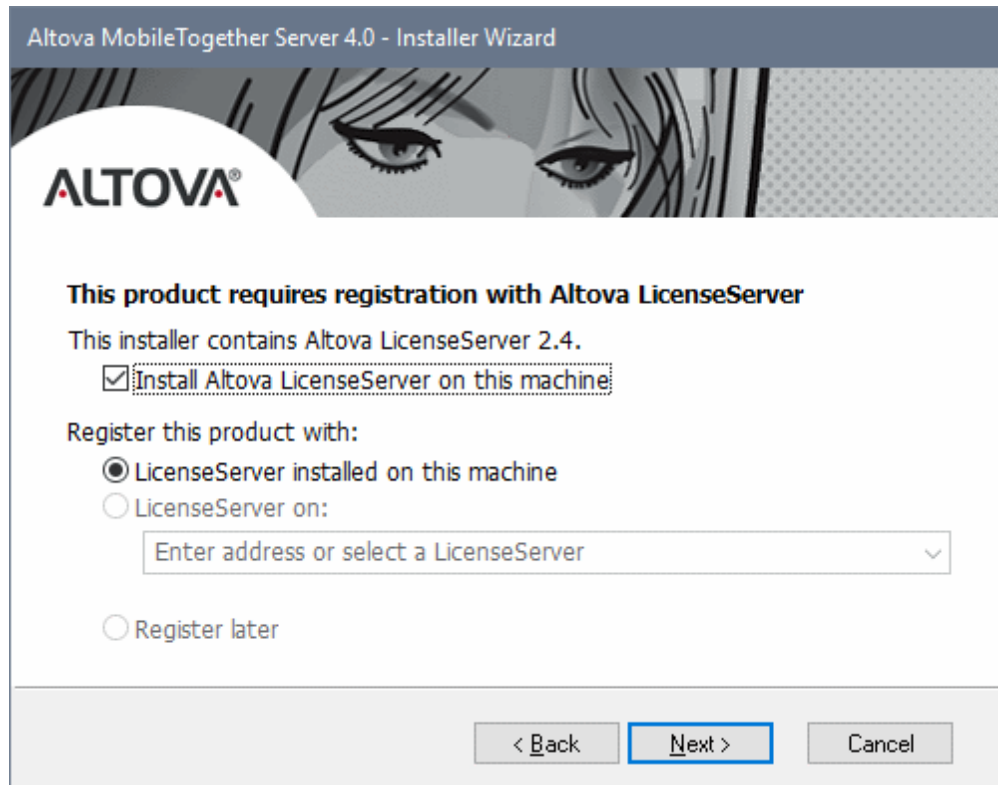
After installation, start LicenseServer as described in [Start Altova LicenseServer](#)<sup>15</sup>.

## Download and install MobileTogether Server

The MobileTogether Server installer can optionally install Altova LicenseServer on the same machine as MobileTogether Server. If you plan to install MobileTogether Server and Altova LicenseServer on the same machine, then it is best that you install both during the MobileTogether Server installation. If Altova LicenseServer is already installed on a machine in your network, then make sure that: (i) the Altova LicenseServer version number is the same or higher than that which corresponds to the MobileTogether Server version you are installing, and (ii) that you register MobileTogether Server with Altova LicenseServer. The Altova LicenseServer version that corresponds to the MobileTogether Server version you are installing is given in the Installer Wizard screen (*see screenshot below*).

To install MobileTogether Server (and, optionally, Altova LicenseServer), do the following:

1. Go to the [MobileTogether Server download page](https://www.altova.com/mobiletogether/download) (<https://www.altova.com/mobiletogether/download>).
2. Download MobileTogether Server for the appropriate OS (MobileTogether Server is available for Windows, Linux and macOS).
3. Start the MobileTogether Server installation.
4. In the Altova LicenseServer screen (*screenshot below*), select: (i) whether you wish to install LicenseServer as part of the MobileTogether Server installation, or not; and (ii) whether you wish to register MobileTogether Server with a LicenseServer or not, and, if yes, then with which LicenseServer. The next chapter, [Register and License MobileTogether Server](#)<sup>21</sup>, describes how to register MobileTogether Server with LicenseServer later—that is, subsequent to the installations of both servers..



If you have difficulties or need detailed information, see the [appropriate Installation section of the MobileTogether Server documentation](#).

After installation, start MobileTogether Server as described in [Start MobileTogether Server](#)<sup>17</sup>.

After you have installed and registered MobileTogether Server, you are ready to license MobileTogether Server. How to do this is described in the chapter [License MobileTogether Server](#)<sup>21</sup>.

## 2.2.2 On Linux

If you are installing MobileTogether Server and Altova LicenseServer on Linux, you must install the two servers separately. The installation and setup steps are as follows:

1. Download the Linux packages of MobileTogether Server and Altova LicenseServer from the [Altova Download Center \(https://www.altova.com/download\)](https://www.altova.com/download).
2. Install the MobileTogether Server and Altova LicenseServer packages. For information about how to do this, see [https://www.altova.com/manual/MobileTogether/mobiletogetherserver/index.html?svstplinux\\_installation.htm](https://www.altova.com/manual/MobileTogether/mobiletogetherserver/index.html?svstplinux_installation.htm).
3. [Start Altova LicenseServer<sup>15</sup>](#) and [MobileTogether Server<sup>17</sup>](#).
4. [Register MobileTogether Server<sup>19</sup>](#).
5. [Assign a license<sup>21</sup>](#) to MobileTogether Server from LicenseServer.

For additional information, see the [MobileTogether Server documentation<sup>7</sup>](#).

### 2.2.3 On macOS

If you are installing MobileTogether Server and Altova LicenseServer on macOS, you must install the two servers separately. The installation and setup steps are as follows:

1. Download the macOS packages of MobileTogether Server and Altova LicenseServer from the [Altova Download Center \(https://www.altova.com/download\)](https://www.altova.com/download).
2. Install the MobileTogether Server and Altova LicenseServer packages. For information about how to do this, see [https://www.altova.com/manual/MobileTogether/mobiletogetherserver/index.html?svstplinux\\_installation.htm](https://www.altova.com/manual/MobileTogether/mobiletogetherserver/index.html?svstplinux_installation.htm).
3. [Start Altova LicenseServer<sup>15</sup>](#) and [MobileTogether Server<sup>17</sup>](#).
4. [Register MobileTogether Server<sup>19</sup>](#).
5. [Assign a license<sup>21</sup>](#) to MobileTogether Server from LicenseServer.

For additional information, see the [MobileTogether Server documentation<sup>7</sup>](#).

## 2.3 Start Altova LicenseServer

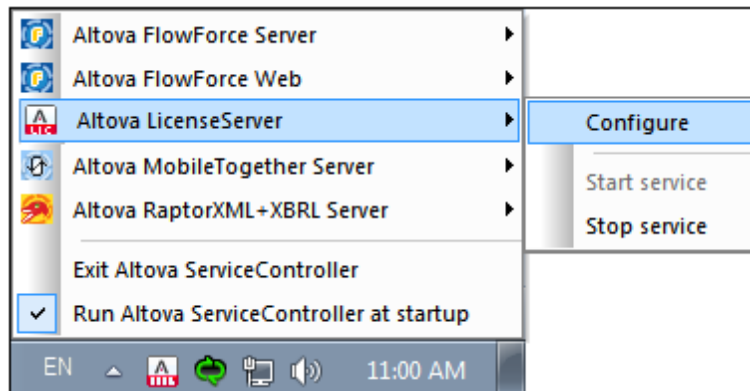
In order to use MobileTogether Server, it must be licensed with an Altova LicenseServer on your network. LicenseServer must be running continuously as a service in order for MobileTogether Server to run. Stopping LicenseServer will also stop MobileTogether Server. If this happens, you will need to first restart LicenseServer (how to do this is described in this chapter) and then restart the stopped MobileTogether Server (see [next chapter](#)<sup>17</sup>).

Start and stop LicenseServer as follows:

### ▼ On Windows

You can start LicenseServer via the Altova ServiceController, which is available in the system tray.

First, click **Start | All Programs | Altova LicenseServer | Altova ServiceController** to start Altova ServiceController and display its icon in the system tray (see *screenshot below*). If you select the *Run Altova ServiceController at Startup* option, Altova ServiceController will start up on system start and its icon will be available in the system tray from then onwards.



To start LicenseServer, click the Altova ServiceController icon in the system tray, hover over **Altova LicenseServer** in the menu that pops up (see *screenshot above*), and then select **Start Service** from the LicenseServer submenu. If LicenseServer is already running, the *Start Service* option will be disabled.

To stop LicenseServer, select **Stop Service** from the LicenseServer submenu (see *screenshot above*).

### ▼ On Linux

To correctly register and license MobileTogether Server with LicenseServer, LicenseServer must be running as a daemon on the network. Start LicenseServer as a daemon with the following command:

[< Debian 8]	<code>sudo /etc/init.d/licenseserver start</code>
[≥ Debian 8]	<code>sudo systemctl start licenseserver</code>
[< CentOS 7]	<code>sudo initctl start licenseserver</code>
[≥ CentOS 7]	<code>sudo systemctl start licenseserver</code>
[< Ubuntu 15]	<code>sudo initctl start licenseserver</code>
[≥ Ubuntu 15]	<code>sudo systemctl start licenseserver</code>
[RedHat]	<code>sudo initctl start licenseserver</code>

If at any time you need to stop LicenseServer, replace `start` with `stop` in the above commands. For example:

```
sudo /etc/init.d/licenseserver stop
```

### ▼ On macOS

To correctly register and license MobileTogether Server with LicenseServer, LicenseServer must be running as a daemon. Start LicenseServer as a daemon with the following command:

```
sudo launchctl load /Library/LaunchDaemons/com.altova.LicenseServer.plist
```

If at any time you need to stop LicenseServer, replace `load` with `unload` in the above command:

```
sudo launchctl unload /Library/LaunchDaemons/  
com.altova.LicenseServer.plist
```



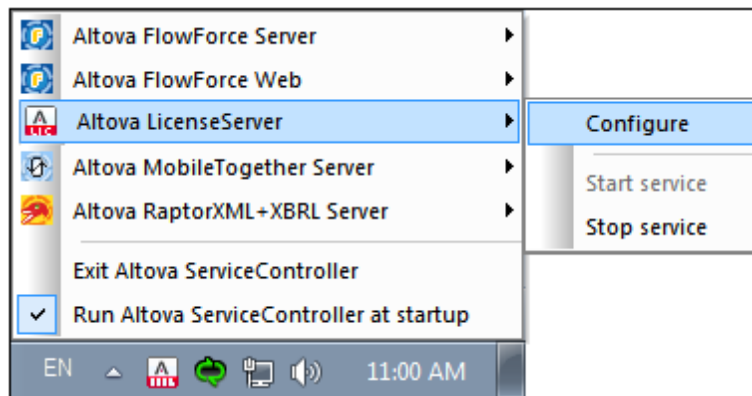
## 2.4 Start MobileTogether Server

In order to run MobileTogether Server, it must be started as a service. How to do this described below.

### ▼ On Windows

You can start MobileTogether Server via the Altova ServiceController, which is available in the system tray.

First, click **Start | All Programs | Altova LicenseServer | Altova ServiceController** to start Altova ServiceController and display its icon in the system tray (see screenshot below). If you select the *Run Altova ServiceController at Startup* option, Altova ServiceController will start up on system start and its icon will be available in the system tray from then onwards.



To start MobileTogether Server, click the Altova ServiceController icon in the system tray, hover over **MobileTogether Server** in the menu that appears (see screenshot above), and then select **Start Service** from the MobileTogether Server sub-menu. If **MobileTogether Server** is already running, the *Start Service* option will be disabled.

To stop MobileTogether Server, select **Stop Service** from the MobileTogether Server sub-menu (see screenshot above).

### ▼ On Linux

Start MobileTogether Server as a daemon with the following command:

[< Debian 8]	<code>sudo /etc/init.d/mobiletogetherserver start</code>
[≥ Debian 8]	<code>sudo systemctl start mobiletogetherserver</code>
[< CentOS 7]	<code>sudo initctl start mobiletogetherserver</code>
[≥ CentOS 7]	<code>sudo systemctl start mobiletogetherserver</code>
[< Ubuntu 15]	<code>sudo initctl start mobiletogetherserver</code>
[≥ Ubuntu 15]	<code>sudo systemctl start mobiletogetherserver</code>
[RedHat]	<code>sudo initctl start mobiletogetherserver</code>

To set up and configure MobileTogether Server, open its Web UI (Setup) page by entering the URL of the Web UI page in the address bar of an Internet browser: `http://<serverIPAddressOrName>:8085`.

Firewall Note

Make sure that the port address is not blocked by your firewall.

▼ **On macOS**

MobileTogether Server server daemon starts automatically after installation and a re-boot of the machine. You can start MobileTogether Server as a daemon with the following command:

```
sudo launchctl load /Library/LaunchDaemons/  
com.altova.MobileTogetherServer5.2.plist
```

If at any time you need to stop MobileTogether Server, use:

```
sudo launchctl unload /Library/LaunchDaemons/  
com.altova.MobileTogetherServer5.2.plist
```

To set up and configure MobileTogether Server, open its Web UI (Setup) page in one of the following ways:

- Double-click the MobileTogether Server 5.2 icon in the Applications folder of the Finder
- Enter the URL of the Web UI page in the address bar of an Internet browser:  
`http://<serverIPAddressOrName>:8085`

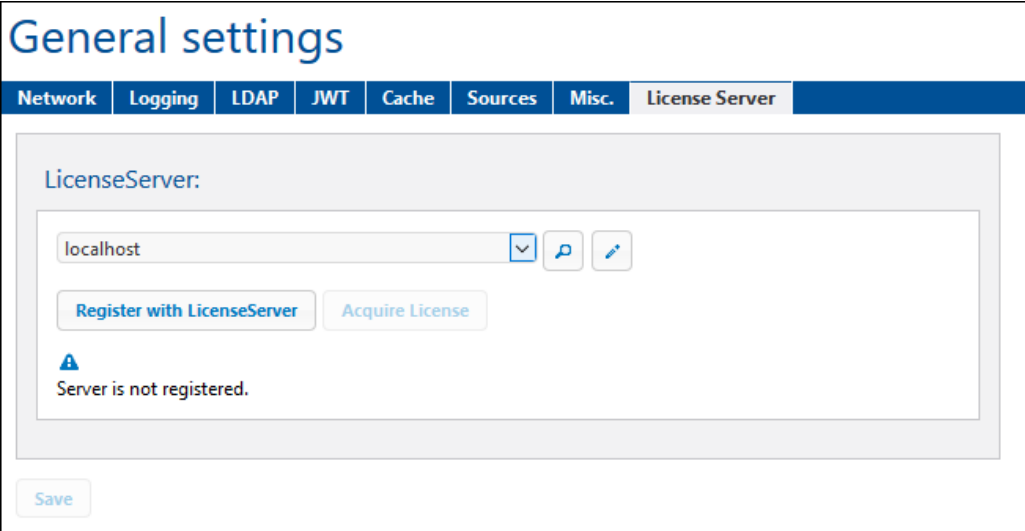
Firewall Note

Make sure that the port address is not blocked by your firewall.

## 2.5 Register MobileTogether Server

MobileTogether Server must be registered with Altova LicenseServer before MobileTogether Server can be licensed. If, during the installation process of MobileTogether Server, you have not registered MobileTogether Server with Altova LicenseServer, then you can do this subsequently via the administrator interface of MobileTogether Server as follows:

1. Open the MobileTogether Server administrator interface by entering in a web browser the IP address of the machine on which MobileTogether Server is installed, followed by the port number 8085. Thus, `http://<mts-ipaddress>:8085`.
2. Enter the username `root` and this user's default password `root`.
3. Go to the *Settings* tab and then to the *LicenseServer* pane (see screenshot below).



The screenshot displays the 'General settings' page of the MobileTogether Server administrator interface. The 'License Server' tab is selected in the top navigation bar. The main content area is titled 'LicenseServer:' and contains a dropdown menu with 'localhost' selected. To the right of the dropdown are two icons: a magnifying glass and a pencil. Below the dropdown are two buttons: 'Register with LicenseServer' and 'Acquire License'. A warning icon and the text 'Server is not registered.' are displayed below the buttons. A 'Save' button is located at the bottom left of the form area.

4. In the *Host* combo box, select the machine on which LicenseServer is installed; alternatively, enter the machine's IP address. The two buttons to the right of the combo box enable you, respectively, to search for machines on the network that host Altova LicenseServer, and to enter a host machine's IP address manually.
5. Click **Register with LicenseServer** to register MobileTogether Server with the selected LicenseServer.

## Register MobileTogether Server from the command line

You can also register MobileTogether Server from the command line interface, by using MobileTogether Server's `licenseserver` command. (The commands below assume that Altova LicenseServer is installed on a machine named `localhost`.)

### On Windows

```
<ProgramFilesFolder>\Altova\<%SVS-APPFOLDER%>\bin\MobileTogetherServer  
licenseserver localhost
```

### On Linux

```
sudo /opt/Altova/<%SVS-APPFOLDER%>/bin/mobiletogetherserver licenseserver  
localhost
```

### On macOS

```
sudo /usr/local/Altova/<%SVS-APPFOLDER%>/bin/mobiletogetherserver  
licenseserver localhost
```

## 2.6 License MobileTogether Server

The CbC Reporting Solution is deployed to and runs on MobileTogether Server. You need a license to use MobileTogether Server. This section describes how to obtain a MobileTogether Server license and assign it from Altova LicenseServer.

### The MobileTogether Server license

You can obtain either:

- a free 30-day MobileTogether Server evaluation license (via Altova LicenseServer; *procedure described below*), or
- a paid MobileTogether Server license via the [Altova Online Shop](#) (in case of questions, contact [sales@altova.com](mailto:sales@altova.com))

After obtaining a license, the license must be uploaded to Altova LicenseServer and assigned from the LicenseServer's administrator interface to MobileTogether Server.

### Get, upload, and assign a MobileTogether Server license

This section describes how to:

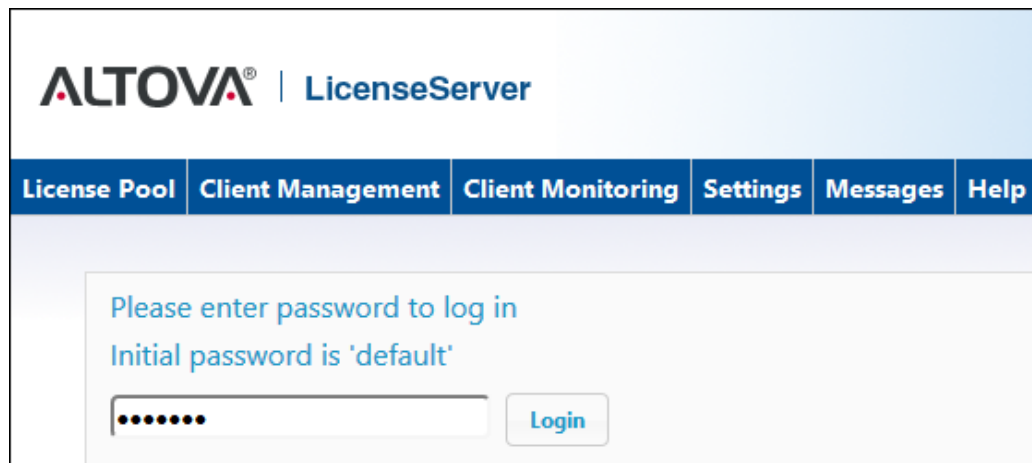
- Get a free 30-day MobileTogether Server evaluation license via Altova LicenseServer,
- Upload the received license to the license pool of Altova LicenseServer, and
- Assign the license to MobileTogether Server.

The uploading and assigning of a paid license is done in the same way as for the evaluation license described below.

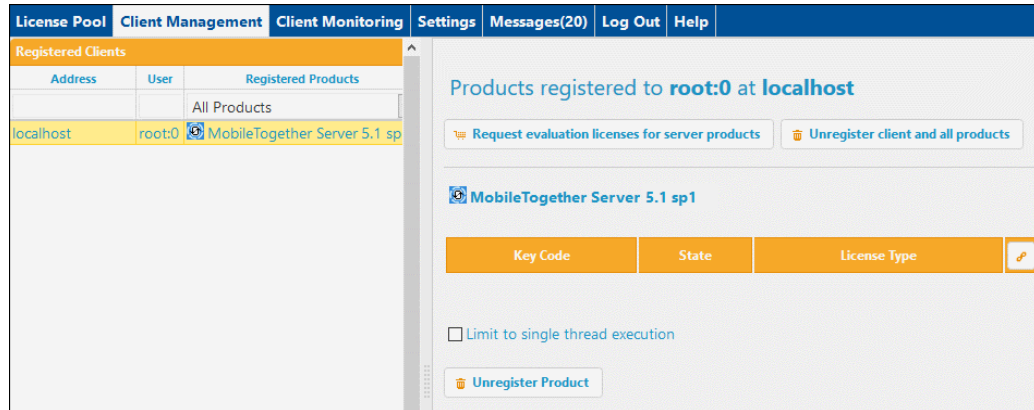
#### Get a free evaluation license

After you have started the virtual machine, get an evaluation license and assign it as follows:

1. In a web browser window, open the web interface of Altova LicenseServer by entering the IP address of the machine on which LicenseServer is installed, followed by the port number 8088. So: `http://<mts-ipaddress>:8088`. The LicenseServer login page is displayed (*screenshot below*).



2. Enter the initial password **default** to log in. (You can change the password later in the *Settings* tab.)
3. Go to the Client Management tab (*screenshot below*). You will see that MobileTogether Server is registered with LicenseServer, but that it is not licensed.



4. In the right-hand pane click **Request evaluation licenses for server products**. The Request Evaluation Licenses dialog (*screenshot below*) appears.

To request a free 30-day software evaluation key code, please enter the required information below. The licensing manager will automatically contact the Altova licensing server, which will fulfill your request and send the key code to you via email.

**IMPORTANT:** To receive an evaluation key code all fields must be filled in. Please ensure that your email address is entered accurately so that the key code can be delivered to you.

Altova MobileTogether Server 5.1 sp1

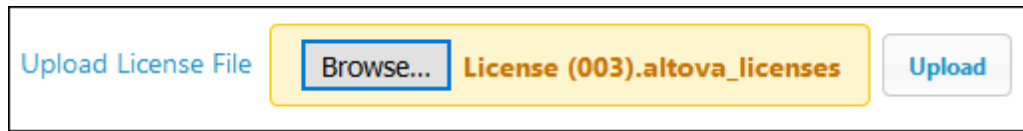
Name: CBCR Tester  
 Company: Altova GmbH  
 Email: test.email@altova.com

5. Enter the requested information and click **Request Evaluation Licenses**.
6. A MobileTogether Server license will be sent to the email address you entered. Save the license to a file location.

#### Upload license to the license pool of LicenseServer

After saving the license to a file location, upload the license to the license pool of LicenseServer as follows:

1. In the LicenseServer interface, go to the License Pool tab (*see first two screenshots of this section, above*).
2. At the bottom of the License Pool tab, click the **Browse** button of the *Upload License File* field.

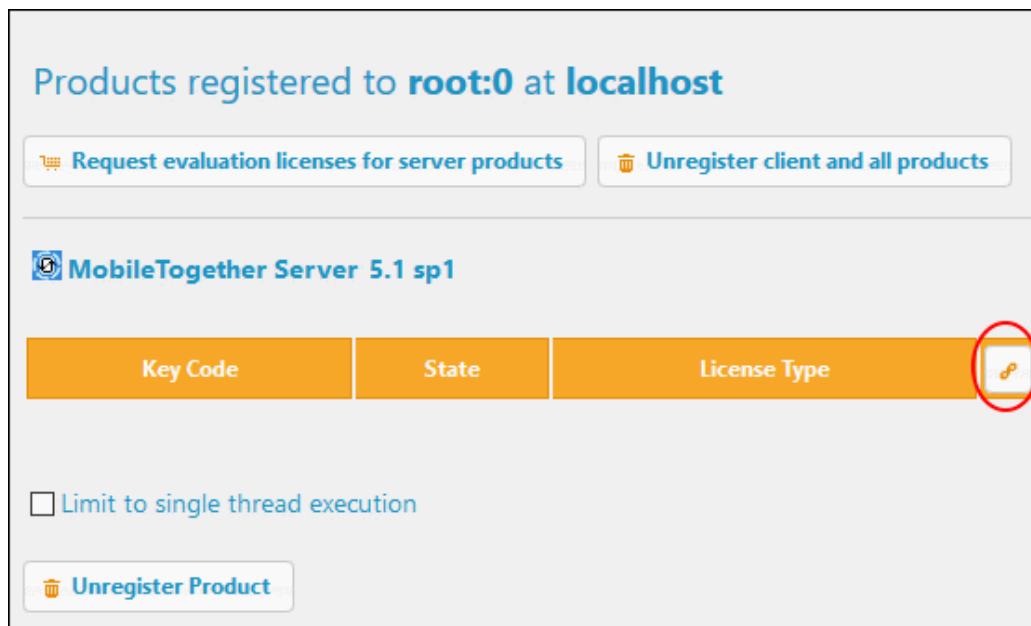


3. Browse and select the license file that you received by email, and click **Upload**. The license will now be available in the License Pool.

#### Assign a license


Assign the MobileTogether Server license from the license pool as described below:

1. Go to the Client Management tab. Click the client in the left pane to display the MobileTogether Server that is registered for this client.
2. If you have not yet accepted the MobileTogether Server license conditions, then the MobileTogether Server entry in the right-hand pane will contain a button for accepting the license. Accept the license now.
3. In the right-hand pane, click **Edit Assigned Licenses** (marked in red in the screenshot below).




4. In the Edit Assigned Licenses dialog that appears (screenshot below), the MobileTogether Server license (that was uploaded to the license pool) will be displayed. Select it and click **Apply Changes**. The license will be assigned.

**Edit Assigned Licenses** ✕

**Product:**  MobileTogether Server 5.1 sp1

**Registered at:** localhost

Requires licenses for 2 CPU cores Max licensed CPU cores: **16**

Available licenses							
	#	License Type	State	Key Code	Expires in days	SMP days left	
<input checked="" type="checkbox"/>	16	CPU Cores	Active	J81T2IM-L94AY3U	1068	1068	

[Apply Changes](#)

The license will be assigned.

**Note:** For detailed information about using and configuring LicenseServer, click **Help** in the LicenseServer interface.



## 2.7 Deploy the Solution to MobileTogether Server

The Altova GDPR Compliance Database and its User Management app, together with associated files, are delivered as a zipped archive that can be downloaded from the Altova website. The zipped archive contains:

- A MobileTogether Package file (**.mtp** file), which is a MobileTogether package containing the CbC Reporting solution and its data files.
- Additional files and folders; these will not be *deployed* to the server but must, instead, be *copied* to the server.

### Deployment steps

Deployment consists of the following steps:

1. Unzip the zipped archive to a suitable location on your network
2. Deploy the MobileTogether package (**.mtp** file) to MobileTogether Server
3. Copy all the other files and folders in the unzipped archive to MobileTogether Server

### Deploy the CbCR MobileTogether package (.mtp file)

To deploy the compliance database and its user management app to MobileTogether Server do the following:

1. Start the MobileTogether Server administrator interface via the URL: `http://<mts-ipaddress>:8085`, and log in (see [Important Information](#)<sup>29</sup> for credentials).
2. In the Workflows tab of MobileTogether Server, click **Create Container** and create a container named **cbc\_reporting** directly under the root. This is the container on the server where you will deploy the solution. Alternatively, you can deploy to any other container you like. If you wish to deploy the solution to the already existing **public** container, then you do not need to create a new container. (For more information about how to do this, see the [MobileTogether Server user manual](#).)
3. In MobileTogether Designer, open the package file (**.mtp** file).
4. You will be asked whether you want to deploy the file. Click **Yes**. (If you need to, you can always deploy via the menu command **File | Deploy to MobileTogether Server**.)
5. In the dialog that appears (*screenshot below*), enter the IP address or network name of the machine hosting MobileTogether Server, the port number **8085** (which is the port number for administrator access to MobileTogether Server), and your login details.

Save Design

Enter the host name and port of a MobileTogether server to deploy the current design.

Server: localhost Port: 8085

User: root  Use SSL

Password: ●●●●

Login: Directly

Global resources

Active configuration: Default

Deploy As

Path: /cbc\_reporting/CbCReporting

The path must start with a slash character.

Description: Solution for OECD Country by Country Reporting

Save design changes on deploying

Reset persistent client data on next workflow run

6. In the *Path* field (see screenshot above), select a suitable folder on the server to which to deploy. You can browse for the folder (aka container) that you want. Note that you can create new containers on the server (see point 2 above). For the situation shown in the screenshot above, the solution will be deployed to the container named `/cbc_reporting`, and it will be named `CbCReporting`.
7. Click **OK** to deploy.

The CbCR solution and its associated files have now been deployed to MobileTogether Server. All you need to do to complete the deployment is to copy additional resources to the server (described below).

### Copy additional files to the server

To complete the deployment of the system you need to copy all the other files and folders from the unzipped archive—other than the package file (`.mtp` file)—to the *Server-side solution's working directory* of MobileTogether Server. Do this as follows:

1. In MobileTogether Server, go to the **Settings | Sources** tab (see [MobileTogether Server user manual](#)) and note the currently selected solution's working directory.
2. Copy all the files and folders in the top-level directory of the unzipped archive, except the package file (`.mtp` file), to the server-side solution's working directory (*refer also to [Important Information](#)*<sup>29</sup>). The SQLite database, named `cbc-reporting-database.sqlite`, is the solution's database and is a key file.

**Note:** You can define any folder on the server to be the *Server-side solution's working directory*, and copy the resources to this location. Note, however, that this location will be the working directory of all MobileTogether workflows that are deployed on this server.

The solution is now deployed to the server together with its database and can be started in a web browser (see [Start the CbCR Solution](#)<sup>28</sup>).

## 2.8 Start the CbCR Solution

The deployed CbC Reporting Solution can be started in any one of the following two ways:

### *Directly in a web browser*

In a web browser type the solution's URL:

```
http://<server-ip-address>:8083/run?d=/<server-path-to-solution>
```

*Examples:*

```
http://localhost:8083/run?d=/cbc_reporting/CbCReporting
```

```
http://localhost:8083/run?d=/public/CbCReporting
```

### *Via the Workflows tab of the MobileTogether Server client interface*

To avoid typing in the entire URL, you can also start the solution by first opening the MobileTogether Server client interface (which provides access to deployed solutions), and then selecting the CbC Reporting solution.

1. In a web browser type the URL to access the MobileTogether Server client interface:  
`http://<server-ip-address>:8083.`
2. If prompted for login credentials, enter them.
3. Open the container that contains the solution (for example, the `cbc_reporting` container or `public` container).
4. Click the URL of the CbC Reporting solution (in the *Run in Browser* column).

## 2.9 Important Information

### Altova LicenseServer

Required in order to license MobileTogether Server.

- *Altova LicenseServer web interface:* `http://<als-ipaddress>:8088`
- *Altova LicenseServer initial password:* `default`

**Note:** The initial password can be changed in the Settings tab of LicenseServer.

### MobileTogether Server administrator interface

Provides access to MobileTogether Server settings.

- *URL:* `http://<mts-ipaddress>:8085`
- *Default user:* `root`
- *Default password:* `root`

**Note:** To be able to log in to the administrator interface of MobileTogether Server, the username must be one that has administrative rights. A user named `root` is pre-defined and has administrator rights. So you can log in with administrator rights for the first time as `root`. You can change the password of `root` in the Users and Roles tab of the administrator interface. In this tab, you can also create additional users with different privileges.

See the [MobileTogether Server user manual](#) for more information.

### MobileTogether Server client interface

The default URL is:

```
http://<mts-ipaddress>:8084
```

The client interface port can be set in the administrator interface of MobileTogether Server. See the [MobileTogether Server user manual](#) for more information.

### MobileTogether Server solutions directory location

The server-side solutions directory is the physical folder location on the server to which solutions are deployed (from MobileTogether Designer). This folder is specified in the *Settings* tab of MobileTogether Server (see [Deploy the Solution to MobileTogether Server](#)<sup>25</sup>). Once this setting has been specified, all deployed files will be saved to this location. After deploying the solution, you must also **manually** save the SQLite database to the **same folder**. You can set any folder on the server to be the server-side solutions directory. The locations of the default solutions folder on Windows, Linux, and macOS, respectively, is given below.

#### On Windows

```
C:\ProgramData\Altova\MobileTogetherServer\SolutionFiles
```

#### On Linux

```
/var/opt/Altova/MobileTogetherServer/SolutionFiles
```

### On macOS

`/usr/local/Altova//MobileTogetherServer/SolutionFiles`

**Note:** The `ProgramData` folder is by default a hidden folder on Windows systems. So you will need to change the option of Windows Explorer that hides folders.

## CbC Reporting Solution

The URL of the CbC Reporting solution is:

`http://<host>:8083/run?d=/cbc_reporting/CbCReporting`

- Replace `<host>` with the IP address or hostname of MobileTogether Server
- Login with `user=root` and `password=root`
- The container names `cbc_reporting` is assumed to be the container [where the CbC Reporting solution has been deployed](#)<sup>25</sup>.

## Online user manuals of Altova products

These are available at the [Altova website](#):

- Altova LicenseServer: <https://www.altova.com/documentation#licenseserver>
- MobileTogether: <https://www.altova.com/documentation#mobiletogether>

# Index

## A

### **Alova product documentation,**

links to online help, 7

### **Altova CbC Reporting Solution,**

installation of system components, 7

installation steps, 7

overview of, 5

### **Altova CbC Reporting Solution in standard installation,**

URL of, 29

### **Altova LicenseServer,**

installation on Linux, 13

installation on macOS, 14

installation on Windows, 10

starting and stopping, 15

## C

### **CbC Reporting Solution,**

see Altova CbC Reporting Solution, 5

starting, 28

### **Command line registration of MobileTogether Server, 19**

## D

### **Deploy solution to MobileTogether Server, 25**

### **Documentation,**

of products at Altova website, 7

## L

### **License for MobileTogether Server, 21**

### **LicenseServer in standard installation,**

initial password of, 29

web interface URL of, 29

## M

### **MobileTogether Designer,**

deploy CbCR solution, 25

### **MobileTogether Designer installation, 8**

### **MobileTogether Server,**

command line registration with Altova LicenseServer, 19

installation on Linux, 13

installation on macOS, 14

installation on Windows, 10

register with Altova LicenseServer, 19

starting and stopping, 17

### **MobileTogether Server in standard installation,**

administrator interface URL, 29

client interface URL, 29

default user and password, 29

solutions directory location, 29

### **MobileTogether Server license,**

assigning, 21

obtaining, 21

## O

### **OECD CbC Reporting,**

XML Schema for, 5

### **Online Help,**

links to, 7

## R

### **Register MobileTogether Server with Altova LicenseServer, 19**

## S

### **Solutions directory location on server, 29**

### **Starting the CbC Reporting Solution, 28**

[www.altova.com](http://www.altova.com)