

Altova CbC Reporting Solution

Installation Guide / Easy Installation

Altova CbC Reporting Solution Installation Guide / Easy Installation

All rights reserved. No parts of this work may be reproduced in any form or by any means - graphic, electronic, or mechanical, including photocopying, recording, taping, or information storage and retrieval systems - without the written permission of the publisher.

Products that are referred to in this document may be either trademarks and/or registered trademarks of the respective owners. The publisher and the author make no claim to these trademarks.

While every precaution has been taken in the preparation of this document, the publisher and the author assume no responsibility for errors or omissions, or for damages resulting from the use of information contained in this document or from the use of programs and source code that may accompany it. In no event shall the publisher and the author be liable for any loss of profit or any other commercial damage caused or alleged to have been caused directly or indirectly by this document.

Published: 2020

© 2020 Altova GmbH

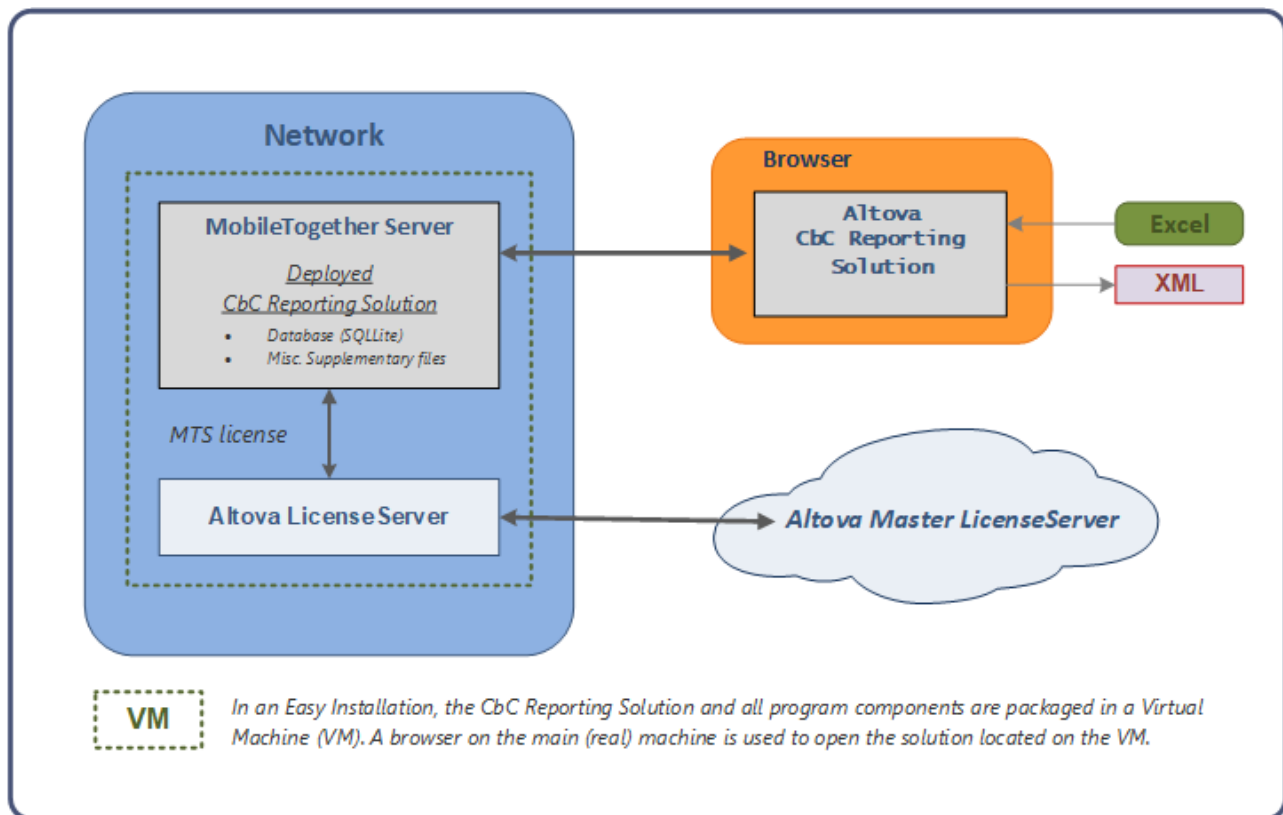
Table of Contents

1	Introduction	4
2	Easy Installation	6
2.1	VMware Player.....	7
2.2	CbCR VM: Download and Extract.....	8
2.3	CbCR VM: Power On.....	10
2.4	CbCR VM: Configure.....	11
2.5	MobileTogether Server License.....	12
2.6	Start CbCR Solution.....	16
2.7	Important Information.....	17
	Index	20

1 Introduction

Altova's County-by-Country Reporting Solution enables you (i) to import and edit, or directly enter, your CbC Reporting (CbCR) data in a standard browser interface, and (ii) to generate XML output that is compliant with the [OECD CbC Reporting XML Schema definition](#).

The CbC Reporting Solution is deployed to a special server—Altova's MobileTogether Server—which you can install on a machine on your network. From here, the solution can be served to a client browser. When the solution is opened in a browser, it can be used to edit and generate your CbC report in XML format. The various components of the Altova CbC Reporting Solution system are shown in the diagram below.



Also see the Altova CbC Reporting Solution webpage: <https://www.altova.com/cbc-reporting-solution>

Two types of installations: easy and standard

You can choose between two types of installation:

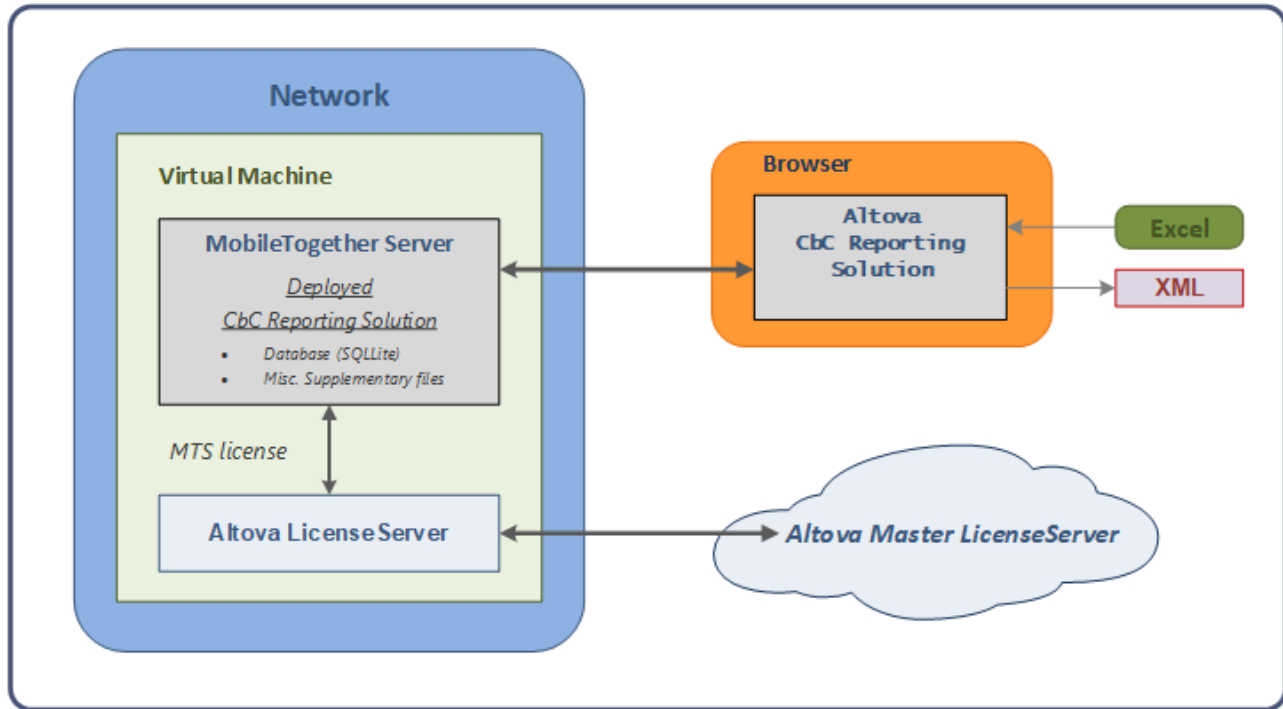
- **Easy Installation:** ⁶ Download the CbCR virtual machine (CbCR VM) and open the VM in VMware Player. The VM contains MobileTogether Server and Altova LicenseServer, pre-installed and ready to use. After obtaining an Altova license, the CbC Reporting Solution can be started directly in a browser from its location on the VM. This easy installation is a quick, secure, and hassle-free way to start your CbC reporting work.

- *Standard Installation*: Install the individual components required to run the CbC Reporting Solution separately. This way you can customize your networking and working environment to suit specific company-internal requirements.

This guide describes the [Easy Installation](#) ⁶ procedure. For information about the Standard Installation, go to the [Altova website](#) to get the guide for that installation type.

2 Easy Installation

The Altova CbC Reporting Solution is available as a Virtual Machine (VM) named **CbC Reporting**. All the program components that are necessary to run the CbC Reporting Solution are pre-installed on the VM (see *diagram below*). So installation is very easy. All that you need to do is to download the VM to a computer on your network and license the pre-installed Altova MobileTogether Server. After doing this, you can power on the CbCR VM, then open the CbC Reporting Solution in a browser and immediately begin working with it.



Easy installation steps

Carry out the following steps to install the CbC Reporting Solution as a virtual machine:

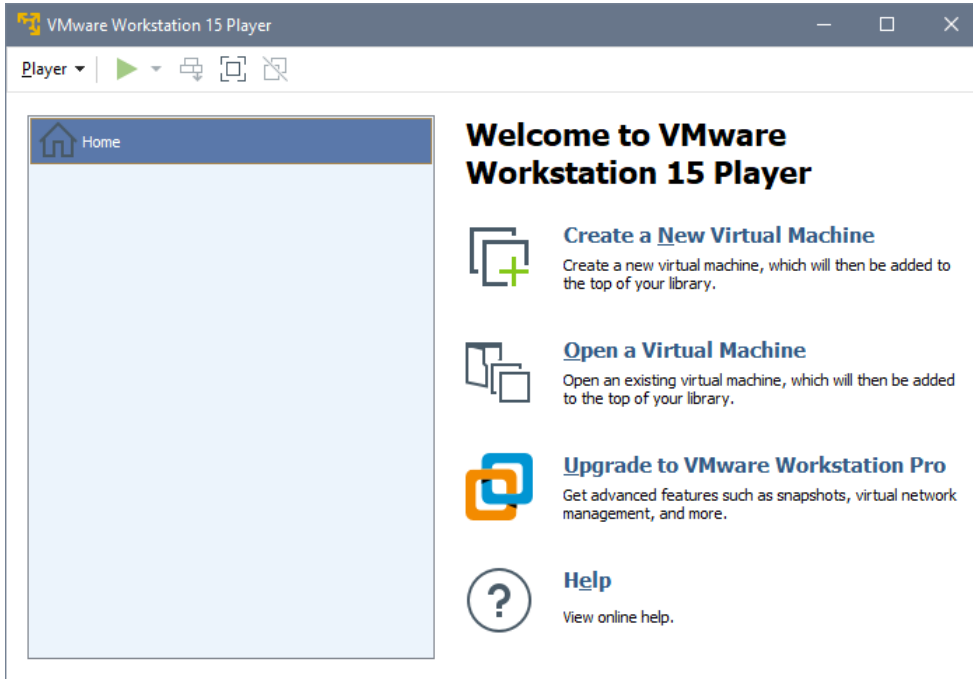
1. [Install VMware Workstation Player](#)⁷.
2. [Download](#)⁸ the zipped archive of the CbCR VM from the [Altova website](#) and [extract it](#)⁸ to a location on your network.
3. In the player, [power on the CbCR VM](#)¹⁰ and [configure it](#)¹¹.
4. [License Altova MobileTogether Server](#)¹² with Altova LicenseServer.
5. [Open the CbC Reporting Solution in a web browser](#)¹⁶ and start work on your project. The web browser that you use must be on your main machine—not on the virtual machine.

Each of these steps is explained in the rest of this chapter.

2.1 VMware Player

In order to run the virtual machine (VM) that contains the CbC Reporting Solution, you will need to install [VMware Workstation Player 15.x](#) or [VMware Fusion 11.x](#). You can download the latest these VMware players from the [VMware.com](#) website. The description below applies to both players.

Install VMware Workstation Player on any suitable machine on your network. On opening the player, you will see a screen like the one shown in the screenshot below.



In the player, you can create new VMs and open existing VMs. Any VM you create or open is listed in the player library, which is shown in the left pane of the player window (see screenshot above). After you download the VM that contains Altova's CbC Reporting Solution, open the CbCR VM in the player. The VM will be added to your player library.

Location of the VMware Workstation Player

After the CbCR VM has been opened and is running in the player, the solution that is contained in the VM can be accessed by typing its URLs in a browser. Usage scenarios vary anywhere between the two listed below:

- A single user accesses the player, manages the player's VM library, and works with the solution via a web browser.
- An administrator manages the VM library. Multiple users work with the solution via web browsers, but they are not involved in the management of the VM library.

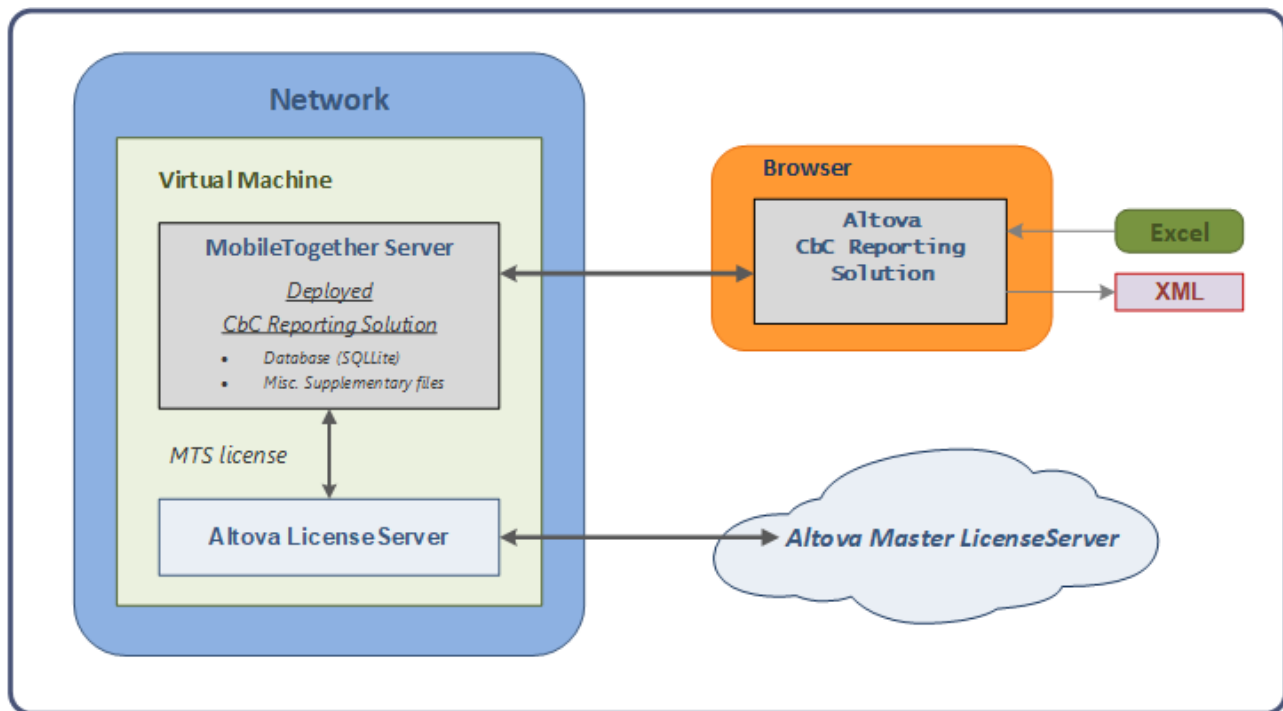
Depending upon the working environment, suitable access and security permissions must be set for the location where the VMware Workstation Player is located.

2.2 CbCR VM: Download and Extract

The CbC Reporting Solution is available as a Virtual Machine (VM), named **CbC Reporting**, that can be opened in VMware Workstation Player.

The VM contains the following program components:

- Altova LicenseServer, which is installed on the VM and is required to license Altova MobileTogether Server
- Altova MobileTogether Server, which is installed on the VM and is pre-registered with the Altova LicenseServer that is installed on the VM.
- Altova CbC Reporting Solution, which is pre-deployed on MobileTogether Server and is ready to be accessed



Note the following points:

- MobileTogether Server serves the CbC Reporting Solution to web browsers and is used for processing actions that a user executes in the solution.
- Although MobileTogether Server is registered with Altova LicenseServer, you must still purchase a license for MobileTogether Server and license it. How to do this is described in the section [MobileTogether Server License](#)¹².

Download and extract the CbCR VM

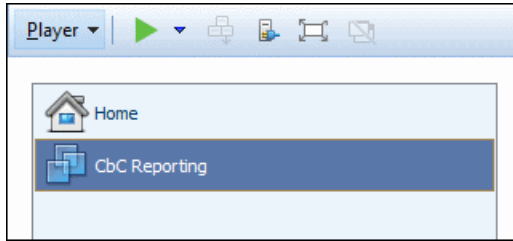
The VM that contains the Altova CbC Reporting Solution (CbCR VM) can be downloaded from:
<https://www.altova.com/cbc-reporting-solution/download>.

The CbCR VM is compressed and packed into a RAR archive file, which is the file that will be downloaded. Extract (decompress) the files in the downloaded archive file to a location that has suitable access and security permissions. After extracting the files, do not rename files or change the relative locations of files within the top-level folder.

2.3 CbCR VM: Power On

To power on the CbCR VM, do the following:

1. Start VMware Workstation Player.
2. Select **Player | File | Open**. Browse for the CbCR VM's configuration (`.vmx`) file (which you [extracted to a location on your network](#)⁸), and click **Open**. The VM appears in the player's library (see *screenshot below*).



3. Select the VM in the library and select **Player | Power | Power On**. Alternatively, you can double-click the VM in the library.
4. After the VM has been powered on (started), the **IP address of your CbCR VM** and the **URLs of LicenseServer and the CBCR solution** will be displayed (see *screenshot below*). Make a note of these; they are required to [license MobileTogether Server that is installed on the VM](#)¹² and to [start the CbC Reporting Solution](#)¹⁶.

```

Ubuntu 18.04.2 LTS cbcreporting tty1
IP address: 127.0.0.2

Use your browser to...

... open LicenseServer (to request evaluation license): http://127.0.0.2:8088
... open CbC-Reporting Solution: http://127.0.0.2:8083/run?d=/public/CbCReporting

cbcreporting login:
  
```

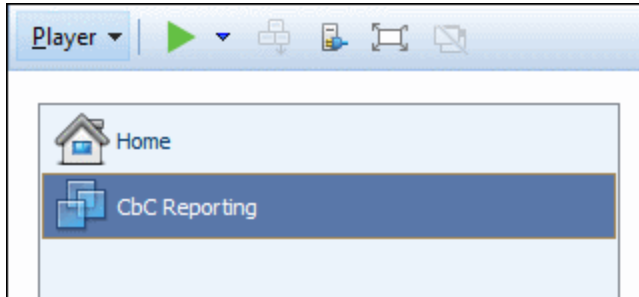
Next steps: (i) ensure that a [bridged network connection has been configured for the VM](#)¹¹; (ii) [license MobileTogether Server](#)¹².

After that, you can [start working with the CbC Reporting Solution](#)¹⁶.

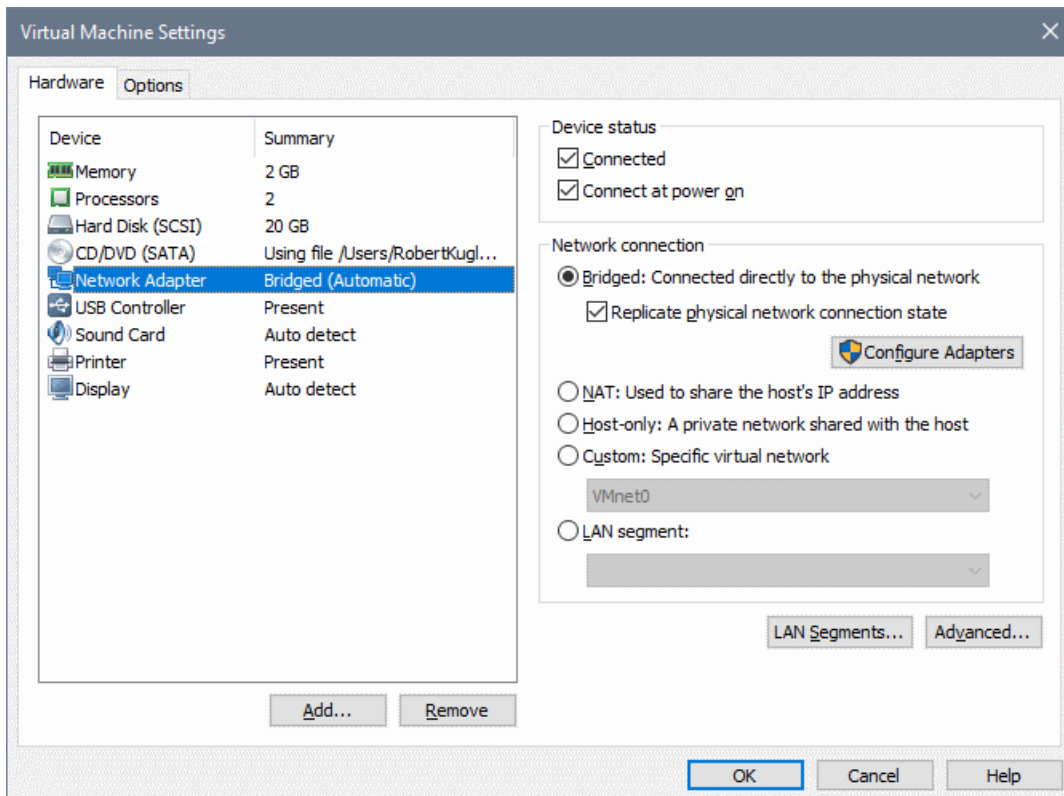
2.4 CbCR VM: Configure

You need to set one important configuration option of the CbCR VM if it is not already correctly set:

1. After the CbCR VM is available in the player's library, select it as shown in the screenshot below.



2. In the player window, select **Player | Manage | Virtual Machine Settings**. Alternatively, select the command **Edit virtual machine settings**, which is located at the bottom right of the player's window. The Virtual Machine Settings dialog (*screenshot below*) appears.



3. For the *Network Adapter* device in the *Hardware* tab (see screenshot), make sure that the *Bridged* network connection is selected.
4. Click **OK**.

You are now ready to [license MobileTogether Server that is installed on the VM](#)¹².

2.5 MobileTogether Server License

The CbC Reporting Solution is deployed to and runs on MobileTogether Server. To use MobileTogether Server, a license is required. This section describes how to obtain a MobileTogether Server license and assign it from the Altova LicenseServer that is pre-installed on your CbCR virtual machine (CbCR VM). After licensing MobileTogether Server, you can [start working with the CbC Reporting Solution](#) ¹⁶.

The MobileTogether Server license

You can obtain either:

- a free 30-day MobileTogether Server evaluation license (via Altova LicenseServer; *procedure described below*), or
- a paid MobileTogether Server license via the [Altova Online Shop](#) (in case of questions, contact sales@altova.com)

After obtaining a license, the license must be uploaded to Altova LicenseServer and assigned from the LicenseServer's administrator interface to MobileTogether Server.

Get, upload, and assign a MobileTogether Server license

This section describes how to:

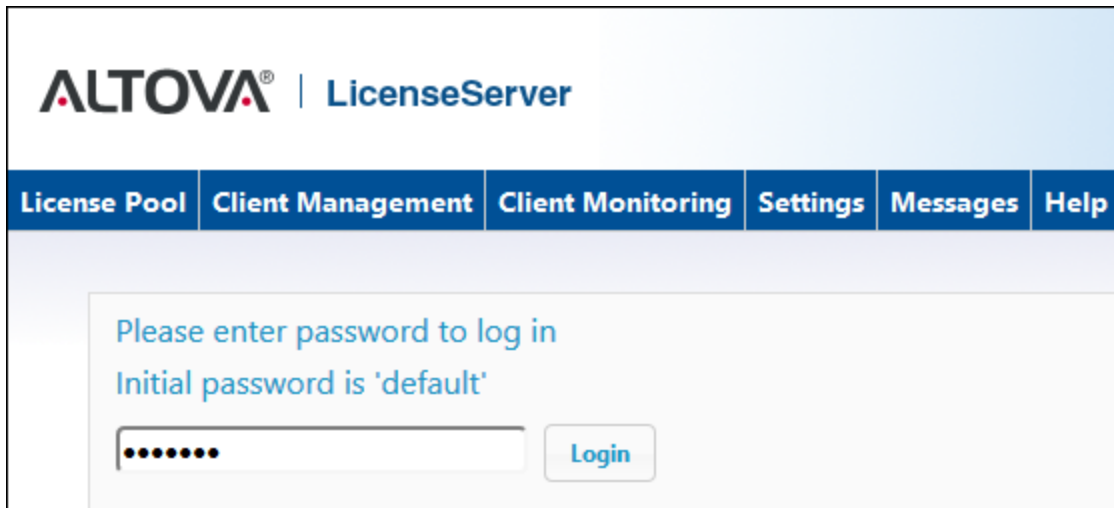
- Get a free 30-day MobileTogether Server evaluation license via Altova LicenseServer,
- Upload the received license to the license pool of Altova LicenseServer, and
- Assign the license to MobileTogether Server.

The uploading and assigning of a paid license is done in the same way as for the evaluation license described below.

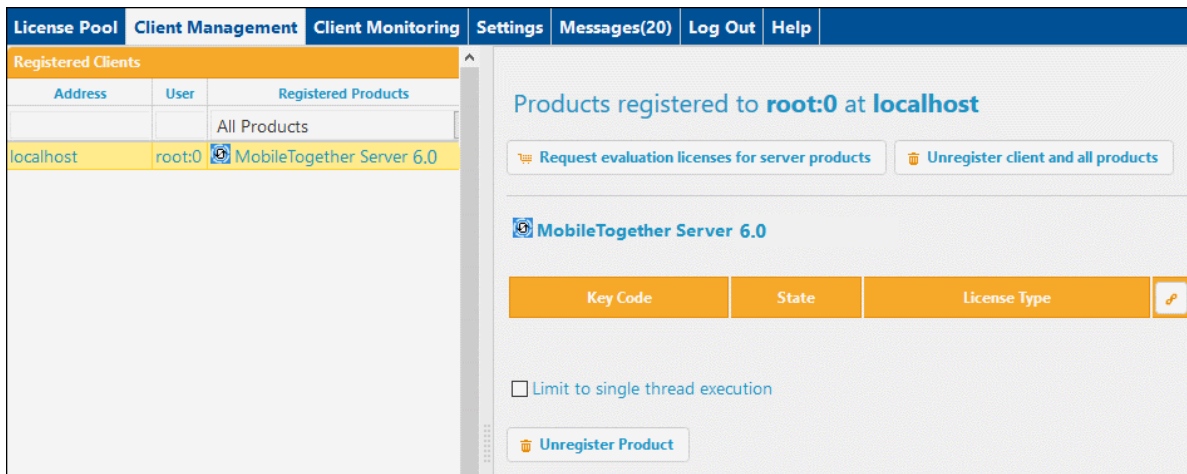
Get a free evaluation license

After you have started the virtual machine, get an evaluation license and assign it as follows:

1. In a web browser window (on your main machine, not on the VM), open the web interface of the Altova LicenseServer that is installed on your VM by entering the following URL: `http://<vm-ipaddress>:8088`. (The IP address of the VM is displayed when the [VM is powered on](#) ¹⁰. Also see [Important Information](#) ¹⁷.) The LicenseServer login page is displayed (*screenshot below*).



2. Enter the initial password `default` to log in. (You can change the password later in the *Settings* tab.)
3. Go to the Client Management tab (*screenshot below*). You will see that MobileTogether Server is registered with LicenseServer, but that it is not licensed.



4. In the right-hand pane click **Request evaluation licenses for server products**. The Request Evaluation Licenses dialog (*screenshot below*) appears.

5. Enter the requested information and click **Request Evaluation Licenses**.
6. A MobileTogether Server license will be sent to the email address you entered. Save the license to a file location.

Upload license to the license pool of LicenseServer

After saving the license to a file location, upload the license to the license pool of LicenseServer as follows:

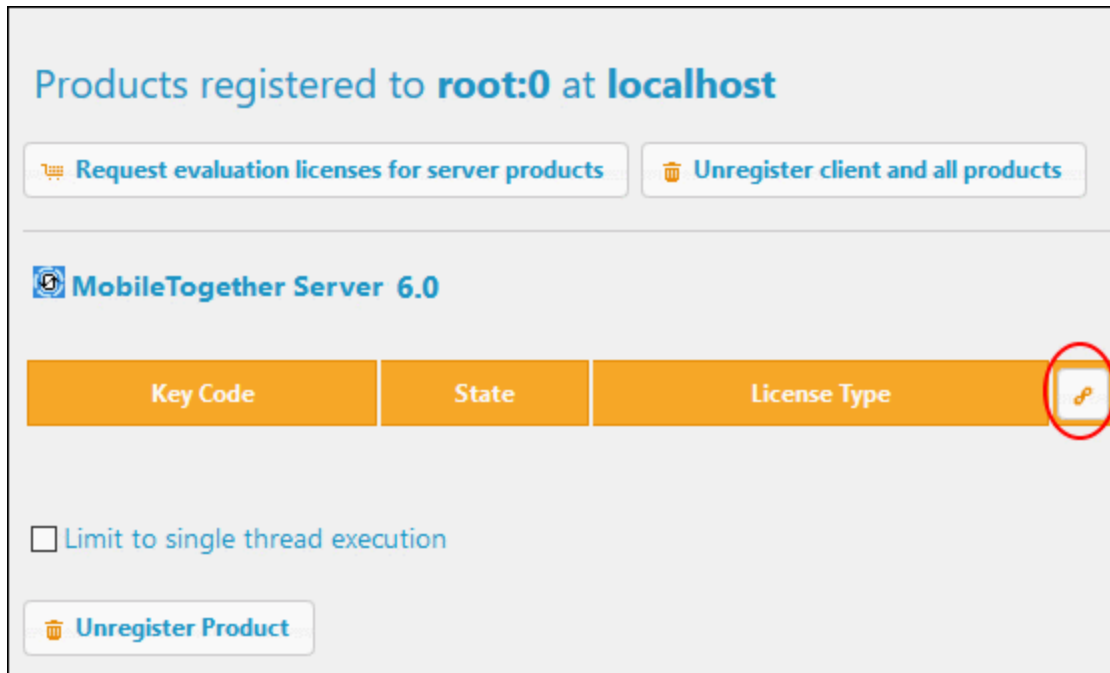
1. In the LicenseServer interface, go to the License Pool tab (see first two screenshots of this section, above).
2. At the bottom of the License Pool tab, click the **Browse** button of the *Upload License File* field.

3. Browse and select the license file that you received by email, and click **Upload**. The license will now be available in the License Pool.

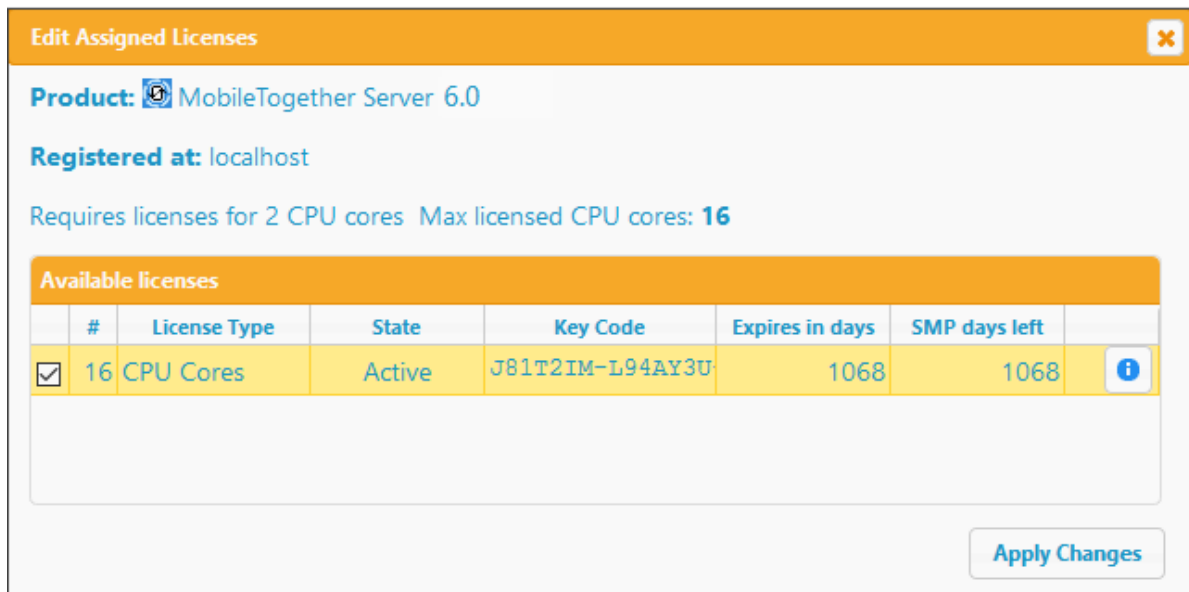
Assign a license

Assign the MobileTogether Server license from the license pool as described below:

1. Go to the Client Management tab. Click the client in the left pane to display the MobileTogether Server that is registered for this client.
2. If you have not yet accepted the MobileTogether Server license conditions, the MobileTogether Server entry in the right-hand pane will contain a button for accepting the license. Accept the license now.
3. In the right-hand pane, click **Edit Assigned Licenses** (marked in red in the screenshot below).



- In the Edit Assigned Licenses dialog that appears (*screenshot below*), the MobileTogether Server license (that was uploaded to the license pool) will be displayed. Select it and click **Apply Changes**. The license will be assigned.



- If MobileTogether Server is unlicensed for a certain period of time, it shuts down, and needs to be restarted. So, after licensing MobileTogether Server, it is best to restart it. Do this by entering `sudo systemctl start mobiletogetherserver` on the command line of the VM (see [Important Information](#) ¹⁷ for additional information).

Note: For detailed information about LicenseServer, click **Help** in the LicenseServer interface.

2.6 Start CbCR Solution

After the CbCR VM has been [powered on](#) ¹⁰, you can start CbC Reporting Solution by typing its URL in a web browser on your main machine (not on the VM):

```
http://<ip-address-of-cbcr-vm>:8083/run?d=/public/CbCReporting
```

In the login dialog that appears, enter username `root` and password `root`. Also see [Important Information](#) ¹⁷.

Alternatively, you can start CbC Reporting Solution via the *Workflows* tab of MobileTogether Server as described below.

1. In a web browser on your main machine (not on the VM), type the URL to open the MobileTogether Server client interface: `http://<ip-address-of-vm>:8083`.
2. If prompted for MobileTogether Server login credentials, enter them (see [Important Information](#) ¹⁷).
3. Go to the *Workflows* tab.
4. Click the `public` container.
5. Click the URL of the CbC Reporting Solution (in the *Run in Browser* column).

Note: For information about the VM's IP address, see [CbCR VM: Power On](#) ¹⁰ and [Important Information](#) ¹⁷.

2.7 Important Information

CbCR virtual machine (CbCR VM)

In order to work on the command line of the CbCR VM, you will need to log in to the CbCR VM. The login credentials are:

- *username: cbcreporting*
- *password: cbcreporting*

Note: You must click inside the player window in order to be able to type at the command line. The password is not displayed as you type it in.

IP address of the CbCR VM

The IP address of the CbCR VM (*<vm-ipaddress>*) is displayed in VMware Player when the the VM is [powered on](#) ¹⁰ (see screenshot below).

```
Ubuntu 18.04.2 LTS cbcreporting tty1
IP address: 127.0.0.2

Use your browser to...

... open LicenseServer (to request evaluation license): http://127.0.0.2:8088
... open CbC-Reporting Solution: http://127.0.0.2:8083/run?d=/public/CbCReporting

cbcreporting login:
```

To find the IP address (for example 127.0.0.2) or hostname: Log in to the VM and run the following commands, respectively, at the VM command line:

- *For the IP address: ifconfig*
- *For the hostname: hostname*

Note: In the URLs given below, use the IP address of the VM in preference to its hostname.

Start services

If MobileTogether Server is unlicensed for a certain period of time, the unlicensed server shuts down, and needs to be restarted. The servers can be started as services on the command line of the VM, and the commands to start them are listed below.

- *Start Altova LicenseServer: sudo systemctl start licenseserver*
- *Start MobileTogether Server: sudo systemctl start mobiletogetherserver*

Note: If, after running a command to restart a server service, you are prompted for a password, enter the password of the virtual machine having the user name *cbcreporting* (see above).

Altova LicenseServer

Required in order to license MobileTogether Server.

- *Altova LicenseServer web interface:* `http://<vm-ipaddress>:8088`
- *Altova LicenseServer initial password:* `default`

Note: The initial password can be changed in the Settings tab of LicenseServer.

MobileTogether Server administrator interface

Provides access to MobileTogether Server settings.

- *URL:* `http://<vm-ipaddress>:8085`
- *Default user:* `root`
- *Default password:* `root`

Note: To be able to log in to the administrator interface of MobileTogether Server, the username must be one that has administrative rights. A user named `root` is pre-defined and has administrator rights. So you can log in with administrator rights for the first time as `root`. You can change the password of `root` in the *Users and Roles* tab of the administrator interface. In this tab, you can also create additional users with different privileges.

MobileTogether Server client interface

The URL to access the client interface of MobileTogether Server on the VM is:

- `http://<vm-ipaddress>:8083`

CbC Reporting Solution

The URL of CbC Reporting Solution on the VM is:

- `http://<vm-ipaddress>:8083/run?d=/public/CbCReporting`
- Login with `user=root` and `password=root`

For information about the CbCR VM's IP address, see above and [CbCR VM: Power On](#)¹⁰.

Language of the VM keyboard

The default language of the VM keyboard layout is German (DE). If the keyboard you are using is designed for another language than German, then you should change the VM's keyboard layout to match that of your actual keyboard.

To change the layout of the VM's keyboard, do the following:

1. At the VM command line, type: `sudo dpkg-reconfigure keyboard-configuration`. (Note that in the German keyboard layout: (i) the hyphen character (–) is located in the row above the spacebar; it is the key immediately to the left of the right-hand-side **Shift** key; (ii) the `ß` key of German keyboards is at the location of the `z` key of EN keyboards.). Press **Enter**.

2. A keyboard configuration menu appears, which lists a number of keyboard models. Navigate to the model that best matches your keyboard. (Use the **Up** and **Down** cursor keys to navigate.) If you are not sure about the correct keyboard model, select one of the generic keyboard models.
3. Press **Enter**. (Alternatively, simultaneously press **Ctrl** and the **Move Right** cursor key to select **Ok**. Then press **Enter**.)
4. In the next menu that appears select the keyboard's country of origin and press **Enter**.
5. In the keyboard layout menu that now appears, select your language preference and press **Enter**.
6. Select a preferred **AltGr** key and **Compose** key. If you have no preferences, use the default selections. Press **Enter** in each case when done.

The keyboard layout will be changed to your selection. To change it again, carry out the procedure listed above with your new preferences.

Index

A

Altova CbC Reporting Solution,

- as a virtual machine, 6
- installation as virtual machine, 6
- overview of, 4

Altova CbC Reporting Solution on VM,

- URL of, 17

Altova LicenseServer,

- see LicenseServer, 17

B

Bridged network connection (on VM in easy installation), 11

C

CbC Reporting Solution,

- see Altova CbC Reporting Solution, 4
- starting (on VM in easy installation), 16
- URL of (on VM in easy installation), 16

CbCR VM,

- configuring, 11
- downloading from Altova website, 8
- extracting, 8
- powering on (starting), 10
- system overview (in easy installation), 8

H

hostname command, 17

I

ifconfig command, 17

K

Keyboard layout of CbCR VM, 17

L

License MobileTogether Server with Altova LicenseServer,

- in easy installation, 12

LicenseServer on VM,

- initial password of, 17
- starting as service, 17
- web interface URL of, 17

M

MobileTogether Server (in easy installation),

- license with Altova LicenseServer, 12

MobileTogether Server on VM,

- administrator interface URL, 17
- client interface URL, 17
- default user and password, 17
- starting as service, 17

O

OECD CbC Reporting,

- XML Schema for, 4

V

Virtual machine (VM),

- changing keyboard layout, 17
- finding hostname of, 17
- finding IP address of, 17
- login information, 17

VM,

- see CbCR VM, 8

VMware Player,

VMware Player,

installation of, 7

location of, 7