



MapForce Graphical Data Mapping, Conversion & Integration Platform

Altova® MapForce® 2015 is an award-winning graphical data mapping, conversion, and integration tool from the creators of XMLSpy®. Its easy-to-use, drag-and-drop design interface allows you to map, convert, and transform data between:

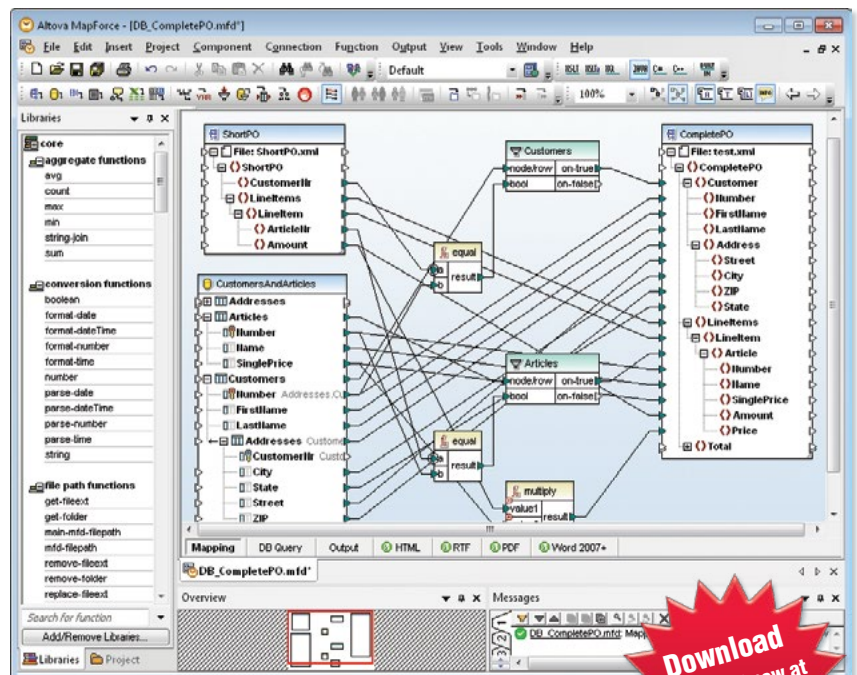


- Drag & drop data mapping & conversion
- Instant data transformation
- Processing data from/into multiple files
- Support for all major relational databases
- Database query window with SQL editor
- FlexText™ utility for parsing flat files
- Support for EDIFACT, X12, HL7, and SAP IDoc
- Support for XBRL 2.1 & XBRL Dimensions 1.0
- Support for WSDL 1.1 & WSDL 2.0
- Supports JSON as input and/or output component
- Connects data to Web services
- Drag & drop Web services creation
- XSLT 1.0/2.0 and XQuery code generation
- Advanced data processing functions with visual function builder
- Chained transformations
- Java, C#, and C++ code generation
- Deploys mappings to FlowForce Server for workflow automation
- Visual Studio & Eclipse integration

MapForce is a powerful any-to-any data integration platform. Its intuitive drag-and-drop interface lets you graphically design complex mapping and integration projects to convert between today's most prevalent data formats. You can transform data instantly to view and save your results, and advanced automation capabilities make mappings available for recurring transformations. Integrates with StyleVision to render reports in HTML, RTF, PDF, and Word OOXML.

Supported databases:

- Microsoft® SQL Server® 2000, 2005, 2008, 2012
- PostgreSQL 8, 9.0.10, 9.1.6, 9.2.1
- Oracle® 9i, 10g, 11g
- MySQL® 5, 5.5
- IBM DB2® 8, 9, 9.5, 9.7, 10.1
- IBM DB2 for iSeries® v6.1, 7.1
- Informix® 11.70
- Sybase® 12, Sybase ASE 15, 15.7
- Microsoft Access™ 2003, 2007, 2010, 2013

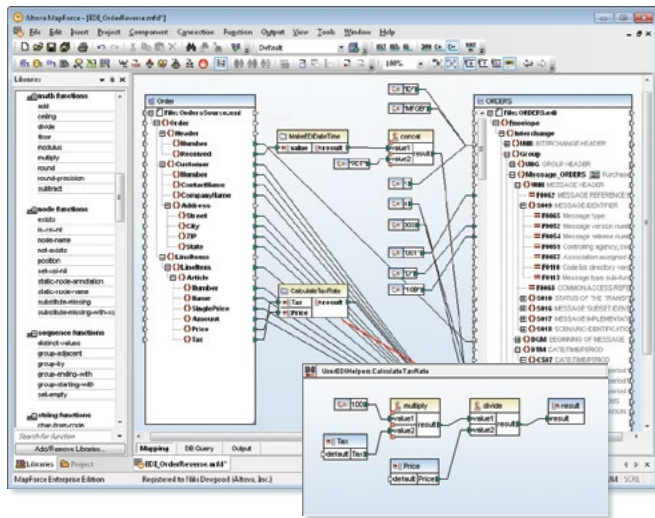


Find out what all of the buzz is about – Download a free, 30-day trial of MapForce at www.altova.com

MapForce Data Mapping Features

Visual Function Builder

- Extensible library of data processing functions
- Filters, conditions, and other advanced functions
- Graphical function design interface
- Ability to save complex functions to automate repetitive tasks
- Using Web services as look-up functions
- Support for multi-stage data processing



Legacy Data Migration

- Support for all EDIFACT, X12, HL7, and SAP IDoc
- Support for all major relational databases
- FlexText™ utility for parsing legacy text files
- Map legacy data with XML, DBs, Excel OOXML, XBRL, Web services, etc.

MapForce Platform for Enterprise Workflow Automation

MapForce is the data mapping component of a robust platform for enterprise data integration when data mappings designed using MapForce are deployed as MapForce Server Execution files for workflow automation by Altova FlowForce Server.

FlowForce Server automates data transformations, report and document generation, and other tasks on dedicated servers, virtual machines, or workstations scaled for the scope of the project. Data transformation jobs are triggered by date and time, detection of new input data, or by HTTP command. Security features permit multiple departments or users to share a single powerful physical server without compromising each other's server objects or private data stores.

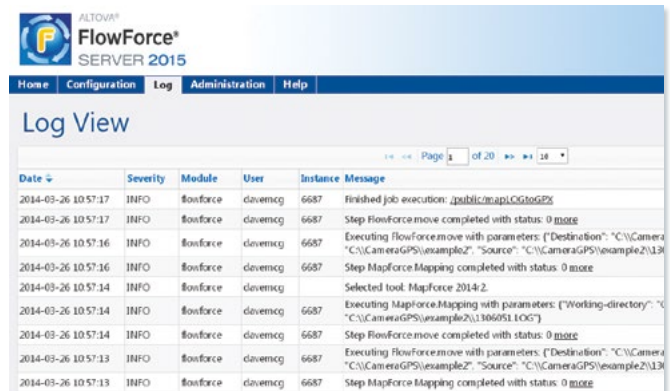
FlowForce Server is available for Windows, Linux, and Mac OS platforms.

Instant Output & Code Generation

Convert data instantly and view results in different formats, depending on your mapping target(s):

- XML Schemas > XML instances
- Databases > SQL scripts
- Flat files > CSV or FLF
- EDI transaction sets > EDIFACT, X12, HL7 and IDoc transactions
- XBRL > XBRL financial reports
- Generate royalty-free source code for data mappings

Or, automate mappings via API or ActiveX control.



Visit www.altova.com for more information and **free**, on-demand product and technology training!

MapForce includes all the functionality listed above and much more.



Better with MissionKit! Get MapForce and other award-winning XML, SQL, and UML tools in a tightly-integrated toolkit for information architects and application developers.