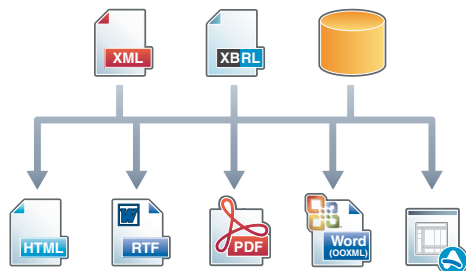


StyleVision – Graphical Stylesheet Designer

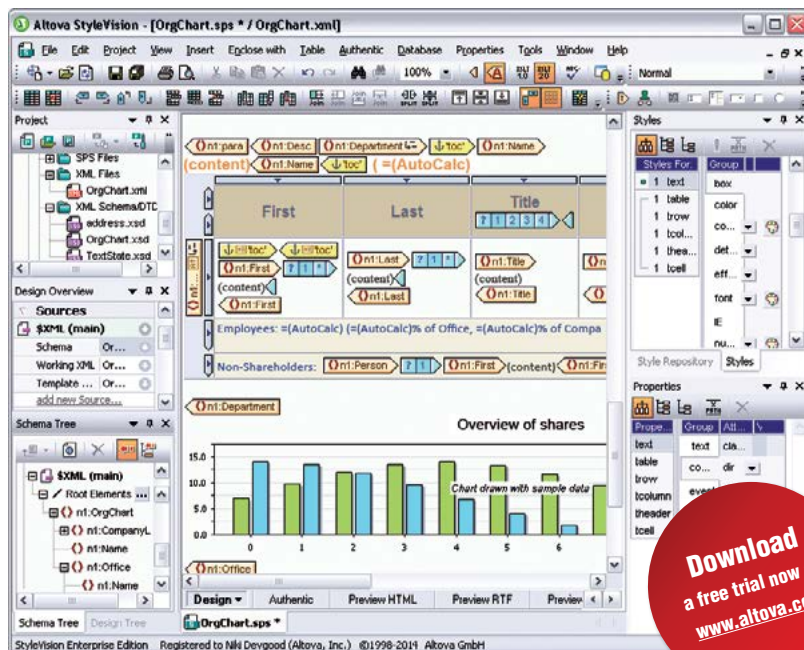
Altova® StyleVision® 2019 is an award-winning business intelligence tool for generating stylesheets, reports, and electronic forms from a wide variety of sources.

StyleVision provides advanced support for transforming XML, XBRL, and database content into HTML, PDF, Microsoft® Word (Open XML), and Authentic® e-Forms, enabling users to design professional decision support resources with powerful features such as dynamic data, modular templates, charts, and more.



- Advanced business report design
- XML, XBRL, and SQL database inputs
- Visual, drag & drop XSLT/XSL:FO stylesheet design
- XPath and XSLT 1.0/2.0/3.0 support
- CSS3, HTML5, and JavaScript support
- Multichannel publishing in HTML, RTF, PDF, & Word
- Fillable PDF form design
- Authentic® enterprise form design
- Charts and graphs as design elements
- Database query window with SQL editor
- Visual Studio® & Eclipse integration
- StyleVision Server for report automation

StyleVision's unique drag-and-drop design interface allows designers and developers to apply graphical designs to their data for simultaneous publication to multiple formats. Advanced entry helper windows and intuitive functionality take the complexity out of stylesheet design and report generation. Templates can be based on XML Schema/DTD, XBRL taxonomy, or database structures, or laid out initially like common desktop publishing applications with source files referenced later.



Supported databases:

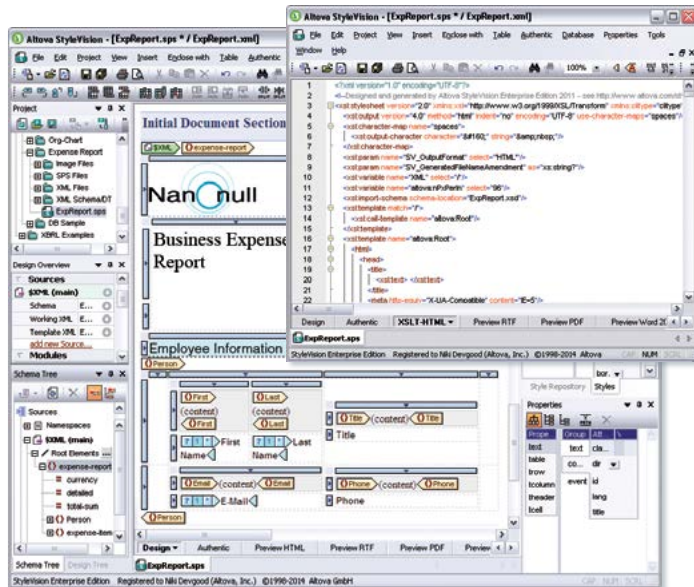
- Firebird 2.5, 3
- IBM DB2 for iSeries® v6.1, 7.1
- IBM DB2® 8, 9, 9.5, 9.7, 10.1, 10.5
- Informix® 11.70, 12.10
- MariaDB 10, 10.3
- Microsoft Access™ 2003, 2007, 2010, 2013
- Microsoft® Azure SQL
- Microsoft® SQL Server® 2005, 2008, 2012, 2014, 2016, 2017
- MySQL® 5, 5.1, 5.5, 5.6, 5.7, 8
- Oracle® 9i, 10g, 11g, 12c
- PostgreSQL 8, 9.0.10, 9.1.6, 9.2.1, 9.4, 9.6, 10
- Progress OpenEdge 11.6
- SQLite 3.x
- Sybase® ASE 15, 16
- Teradata 16

See why StyleVision is the stylesheet design and multi-channel reporting tool everyone is talking about – Download a free 30-day trial at www.altova.com

StyleVision Design Interface

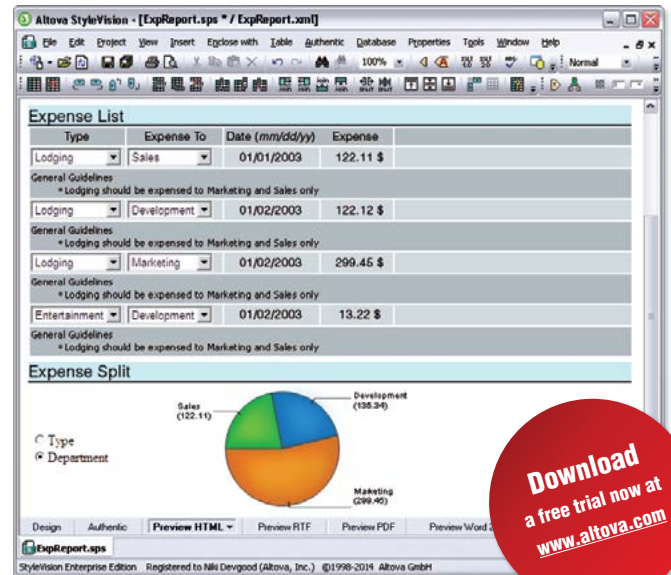
Stylesheet Designer

- Drag & drop interface with intelligent entry helpers
- Design based on XML, XBRL, and/or database source(s)
- User-defined templates
- CSS3, HTML5, & JavaScript
- Advanced stylesheet functions
- Multichannel output: HTML, Word, PDF, e-Forms



Reporting Tool

- Visual report design for XML, XBRL, and database content
- Dynamic reporting for variable data with consistent formatting
- Charting and graphing support
- Flexible design process
- Multichannel output: HTML, Word, PDF, e-Forms
- Report automation via StyleVision Server



Authentic® – Electronic Forms



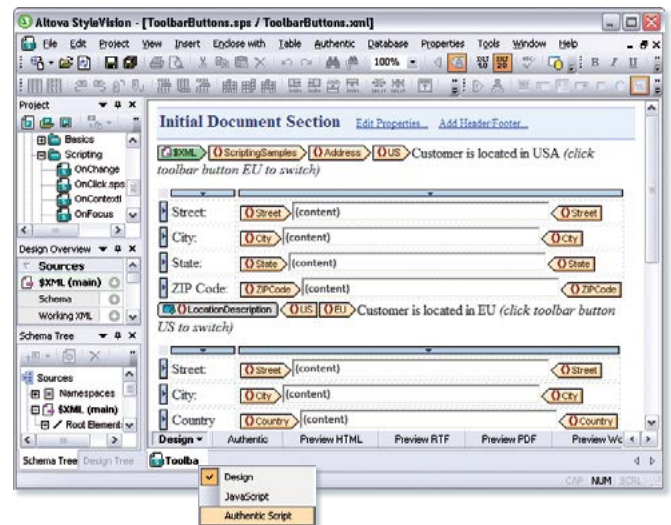
e-Forms designed in StyleVision allow non-technical users to efficiently update data in the Authentic XML and database content editor. StyleVision & Authentic provide:

- Form design and editing for XML and databases
- WYSIWYG word processor-style interface
- Context-sensitive entry helpers
- Complex table handling
- Dynamic form presentation
- Interactive form design for data entry applications



Free Online Training

Visit www.altova.com for more information and on-demand product and technology training!



StyleVision and Authentic include all the functionality listed above and much more.



Better with MissionKit! Get StyleVision and other award-winning XML, SQL, and UML tools in a tightly-integrated toolkit for information architects and application developers.