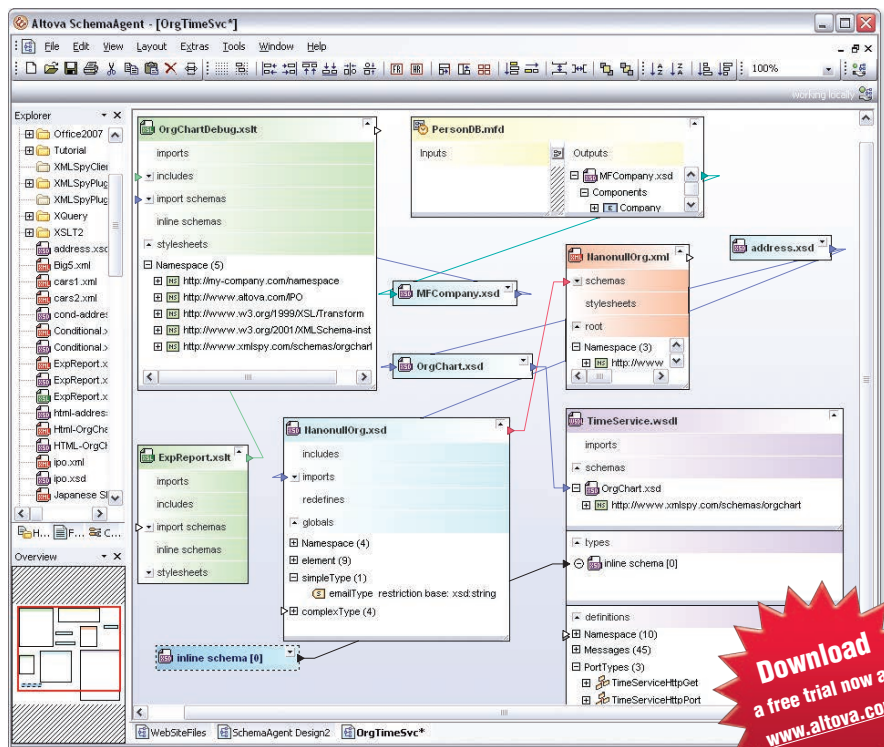


SchemaAgent – XML File Management Tool

Altova® SchemaAgent® 2012 is a visionary tool for analyzing and managing relationships among XML Schemas, XML instance documents, XSLT files, and WSDL files, as well as viewing files used in Altova MapForce® data mapping projects – across a project, an intranet, or even an enterprise. It allows you to visualize and manage XML file relationships easily via its graphical design view, and create new relationships using drag-and-drop functionality to automatically configure imports, includes, and/or redefines (IIRs).

- Analyze XML file relationships in any repository
- Visualize files as graphical components
- View details of displayed files (IIRs, global elements, namespaces, etc.)
- Immediately identify linked, referenced & related files
- Configure IIRs graphically
- Build complex files from smaller components
- Re-use standardized components in a modular development approach
- Access schema components in XMLSpy XML Schema editor
- Print graphical representations to document information architecture
- Understand file dependencies & the impact of every change

Since SchemaAgent allows you to analyze and manage your XML Schema, XSLT, and WSDL files as a pool of resources, you can easily construct complex documents from elements of files distributed about your network. This promotes the design of componentized files on which your group can standardize, and allows you to re-use existing components to reduce development times. SchemaAgent is an invaluable tool for visualizing, modeling, and reusing your XML information assets.

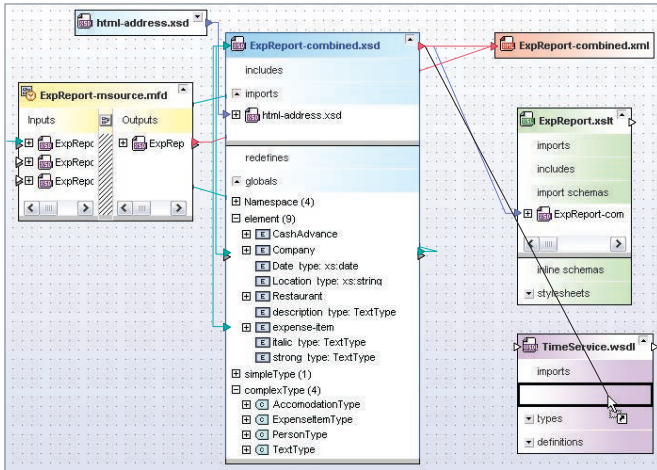


Manage your XML assets with ease – Download a free, 30-day trial of SchemaAgent at www.altova.com

SchemaAgent XML File Management Tools

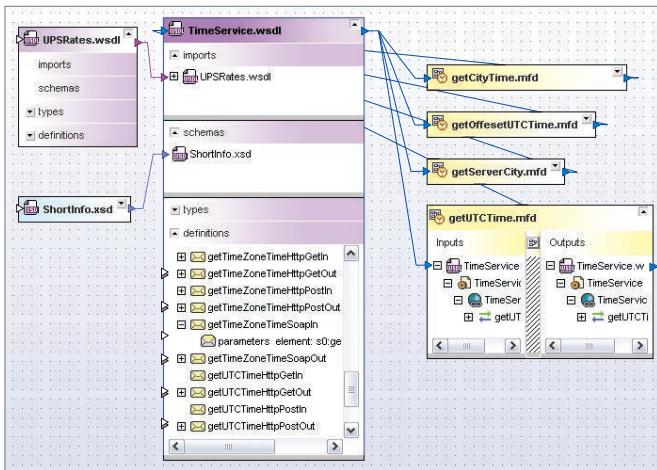
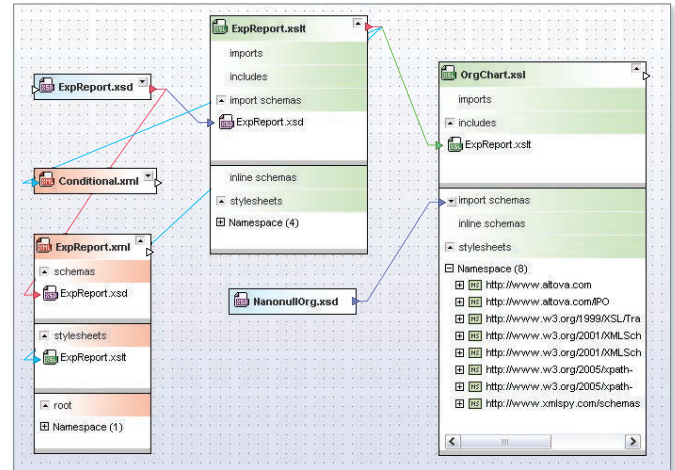
XML Schema Management

- View XML Schemas as graphical components
- Analyze & manage related XSD, XML, XSLT, WSDL, & MapForce data mapping files
- Display XSD details: IIRs, namespaces, types, global components, etc.
- Drag & drop to manage IIRs
- Access XSDs & their components in XMLSpy's XML Schema editor
- Build complex XSDs from smaller components



XSLT Management

- View XSLT stylesheets as graphical components
- View & manage related XSD, XSLT, & XML files
- Display XSLT details: imports, includes, schemas, namespaces, etc.
- Drag & drop to import/include XSD & XSLT files
- Build complex stylesheets from smaller components



WSDL Management

- View WSDL files as graphical components
- View & manage related XSD, WSDL, and MapForce Web services mapping projects
- Display WSDL details: imports, types, schemas, definitions, etc.
- Drag & drop to import WSDL files or associate WSDL & XSD files



Visit www.altova.com for more information, Flash demos, and free online product and technology training.



SchemaAgent is available separately or as part of the Altova MissionKit, the integrated suite of XML, database, and UML tools that delivers up to eight products for less than the price of two.*

*Pricing comparison is edition-specific and based on Altova MissionKit vs. individual licenses of XMLSpy and MapForce.