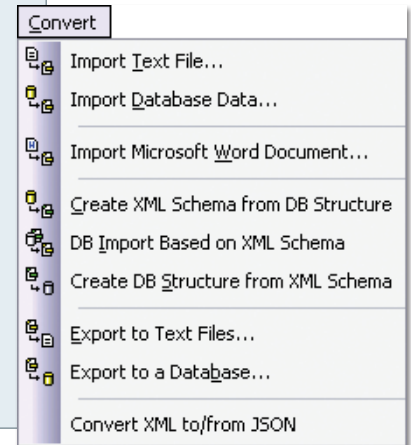


## XMLSpy XML Editor

Altova® XMLSpy® 2010 is the world's best-selling XML development environment for modeling, editing, transforming, debugging, and profiling all XML technologies. XMLSpy delivers the power and functionality you need to create the most advanced XML and Web services applications, yet at the same time it's flexible enough to allow you to work with XML using the views and options that best suit your business needs and working preferences.

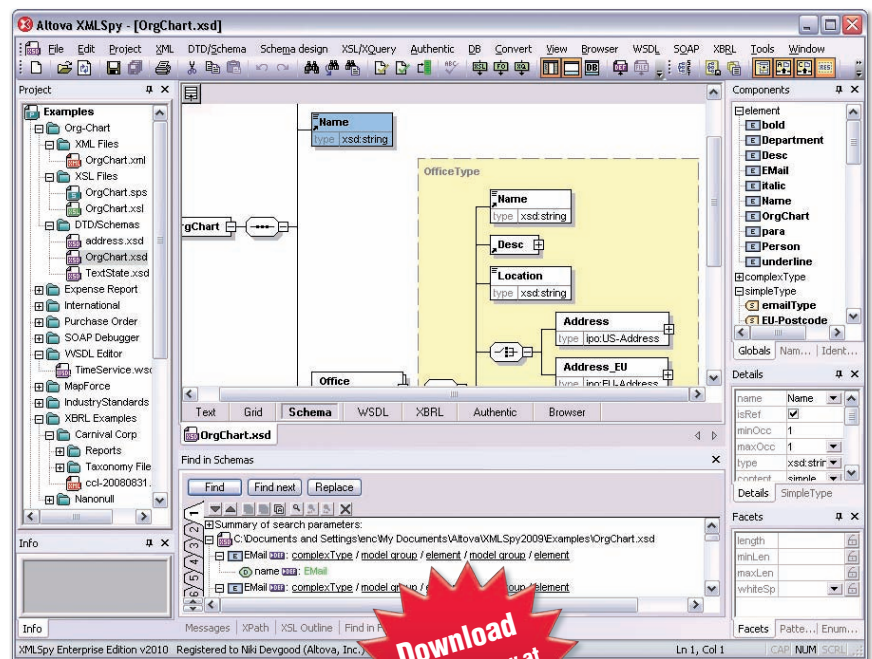
- XML editor
- Text-based and graphical editing views
- Advanced XML validation features
- Graphical XML Schema / DTD editor
- XSLT 1.0/2.0 editor, debugger, profiler
- XQuery editor, debugger, profiler
- XPath 1.0/2.0 analyzer & auto-completion
- Relational database support
- Graphical WSDL 1.1/2.0 editor & converter
- SOAP client & debugger
- XBRL validator & taxonomy editor
- Support for Office Open XML files (.docx, .xlsx, .pptx)
- JSON editor & JSON ↔ XML conversion
- Java, C#, C++ code generation
- Visual Studio & Eclipse integration



XMLSpy provides unsurpassed compliance with the latest industry standards, from XSLT 2.0 and XQuery to WSDL 2.0 and XBRL. It even supports the Office Open XML (OOXML) formats utilized by Microsoft® Office 2007. The advanced functionality in XMLSpy is coupled with user-friendly views and entry helpers, wizards, and debuggers, helping developers create, edit, and optimize today's cutting-edge XML-based applications with ease.

### Supported databases:

- Microsoft® SQL Server® 2000, 2005, 2008
- IBM DB2® 8, 9
- IBM DB2 for iSeries® v5.4, 6.1
- Oracle® 9i, 10g, 11g
- Sybase® 12
- MySQL® 4, 5
- PostgreSQL 8
- Microsoft Access™ 2003, 2007



XMLSpy XML Schema Editor

See why XMLSpy is the choice of over 3,5 million top developers – Download a free, 30-day trial at [www.altova.com](http://www.altova.com)

# XMLSpy XML Development Tools

## XML Schema & DTD Tools

- Graphical XML Schema editor
- XSD ↔ DTD conversion
- XSD ↔ database schema conversion
- Generation of sample XML instances
- Generation of schemas from XML instances
- Advanced find & replace across multiple schemas
- Schema-based code generation in Java, C++, C#
- Optimizations for extremely large files

## XSLT & XQuery Tools

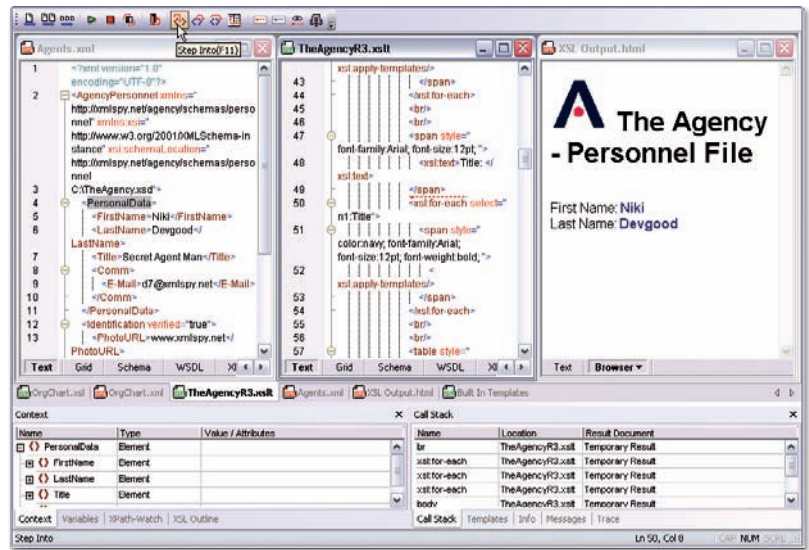
- Support for XSLT 1.0/2.0 & XQuery 1.0
- XSL Outline & XSLT Info entry helper windows
- XSLT & XQuery editors
- XSLT & XQuery debuggers
- XSLT & XQuery profilers
- XSLT & XQuery development for OOXML
- Support for stylesheets with Java, C#, JavaScript, VBScript code

## Web Services Tools

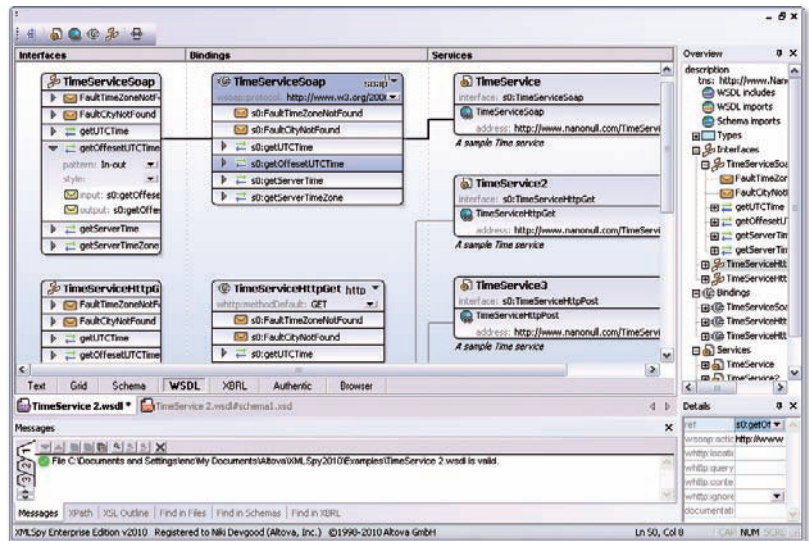
- Graphical WSDL 1.1/2.0 editor
- WSDL 1.1 ↔ 2.0 conversion
- SOAP debugger
- Sharepoint® Server support
- Microsoft® Visual Studio® integration
- Eclipse integration

## XBRL Tools

- Validation of XBRL 2.1 & Dimensions 1.0
- Graphical XBRL Taxonomy Editor
- XBRL Taxonomy Wizard
- Comprehensive XBRL documentation



XMLSpy XSLT Debugger



XMLSpy WSDL Editor

XMLSpy includes all the functionality listed above and much more.



Visit [www.altova.com](http://www.altova.com) for more information, Flash demos, and free online product and technology training.



XMLSpy is available separately or as part of the Altova MissionKit, the integrated suite of XML, database, and UML tools that includes eight products for less than the price of two.\*

\*Pricing comparison is edition-specific and based on Altova MissionKit vs. individual licenses XMLSpy and MapForce.

© Copyright 2010 Altova® GmbH. All rights reserved. Altova®, XMLSpy®, MapForce®, StyleVision®, UModel®, DatabaseSpy®, DiffDog®, SchemaAgent®, SemanticWorks®, Authentic®, and MissionKit® are trademarks or registered trademarks of Altova® GmbH in the United States and/or other countries. Microsoft and Visual Studio are trademarks or registered trademarks of Microsoft Corporation in the United States and/or other countries. Other company, product, and service names may be trademarks or service marks of others.