



MapForce Graphical Data Mapping, Conversion & Integration Tool

Altova® MapForce® 2009 is an award-winning graphical data mapping, conversion, and integration tool from the creators of XMLSpy®. Its easy-to-use, drag-and-drop design interface allows you to map, convert, and transform data between:



XML



Databases



Flat Files



EDI



Excel 2007



XBRL



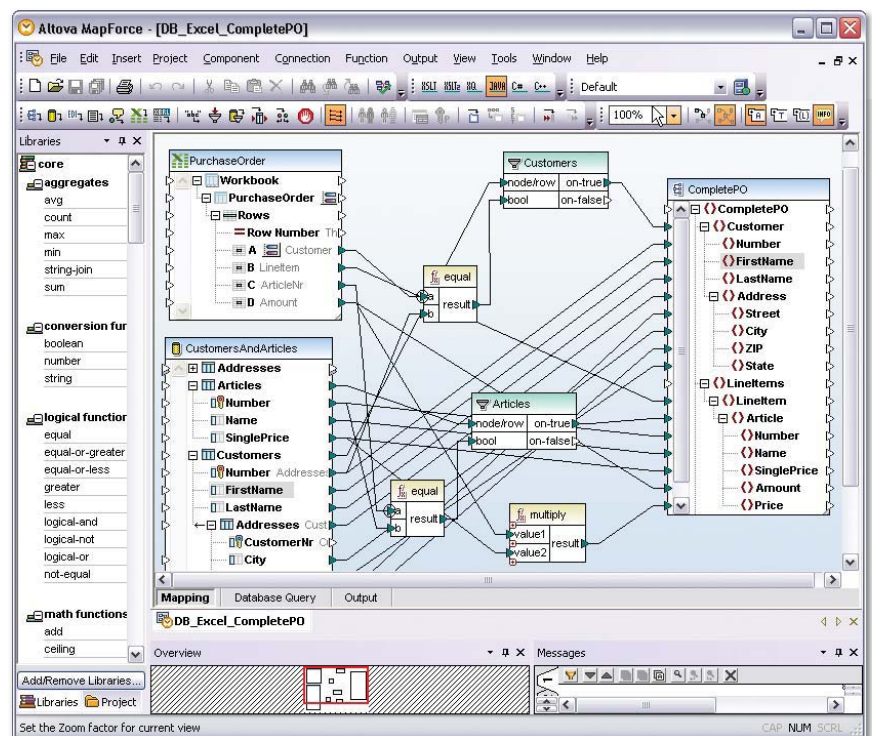
Web Services

- Drag & drop data mapping & conversion
- Instant data transformation
- Support for all major relational databases
- Database query window with SQL editor
- FlexText™ utility for parsing flat files
- Support for EDIFACT, X12, and HL7 EDI messages
- Support for XBRL 2.1 & XBRL Dimensions 1.0
- Connecting data to Web services
- Drag & drop Web services creation
- XSLT 1.0/2.0 and XQuery code generation
- Advanced data processing functions
- Visual function builder
- Java, C#, and C++ code generation
- Command line automation
- OLE & ActiveX controls
- Visual Studio & Eclipse integration

MapForce is a powerful any-to-any data integration tool. Its sophisticated and intuitive drag-and-drop mapping interface allows you to graphically design complex mapping and conversion projects to convert between today's most prevalent data formats. You can transform data instantly to view and save your results, and advanced automation capabilities make mappings available for future and recurrent transformations.

Supported databases:

- Microsoft® SQL Server® 2000, 2005, 2008
- IBM DB2® 8, 9
- IBM DB2 for iSeries® v5.4
- Oracle® 9i, 10g, 11g
- Sybase® 12
- MySQL® 4, 5
- PostgreSQL 8
- Microsoft Access™ 2003, 2007

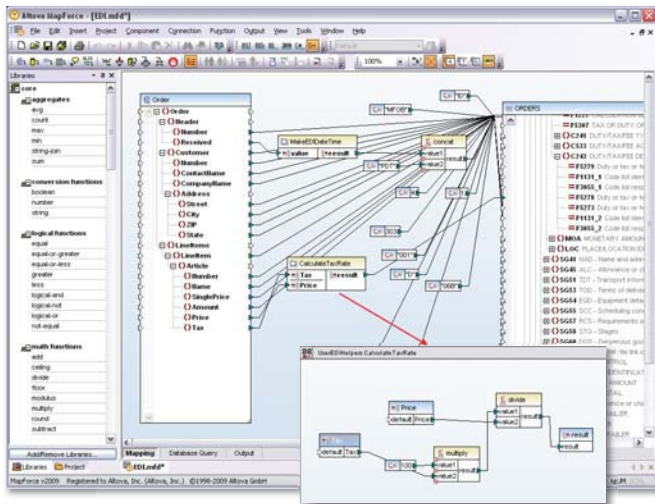


Find out what all of the buzz is about – Download a free, 30-day trial of MapForce at www.altova.com

MapForce Data Mapping Tools

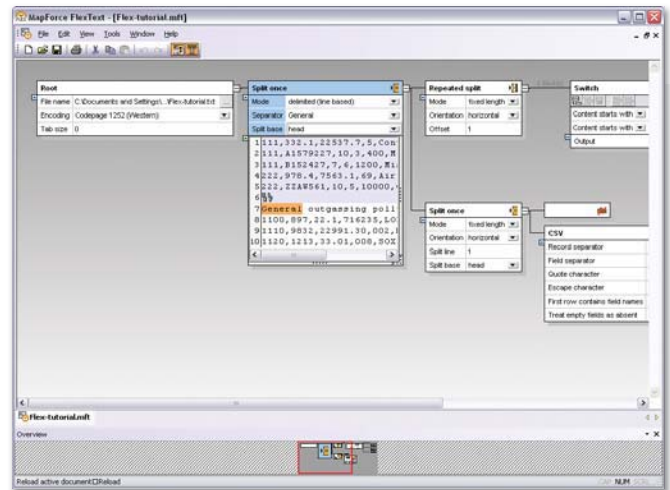
Visual Function Builder

- Extensible library of data processing functions
- Filters, conditions, and other advanced functions
- Graphical function design interface
- Ability to save complex functions to automate repetitive tasks
- Using Web services as look-up functions
- Support for multi-stage data processing



Migrating Legacy Data Formats

- Support for all EDIFACT, X12, and HL7 EDI messages
- Support for all major relational databases
- FlexText™ utility for parsing legacy text files
- Mapping legacy data with XML, DBs, Excel 2007, XBRL, Web services, etc.
- Generating new Web services to consume or write to legacy data stores



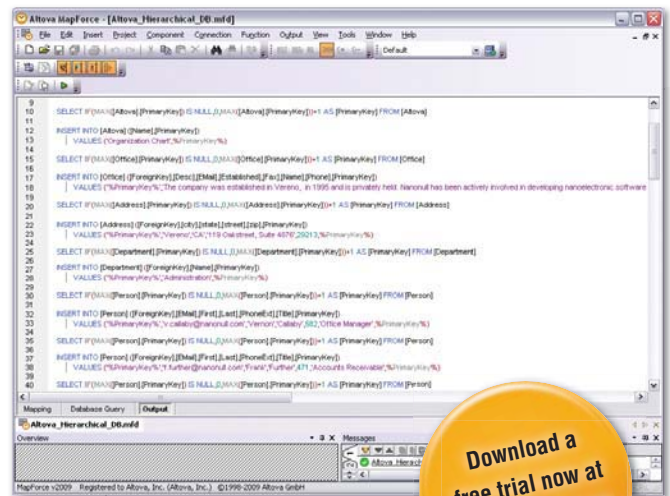
Instant Output and Code Generation

Convert data instantly and view results in different formats, depending on your mapping target(s):

- XML Schemas > XML instances
- Databases > SQL scripts
- Flat files > CSV or FLF
- EDI transaction sets > EDIFACT, X12, HL7 transactions
- Excel 2007 > OOXML
- XBRL > XBRL financial reports
- Web services > SOAP messages

Or automate mappings through the command line or autogenerated royalty-free code in:

- XSLT 1.0/2.0 & XQuery (XML-to-XML mappings only)
- Java, C#, & C++



Download a
free trial now at
www.altova.com

MapForce includes all the functionality listed above and much more.

Visit www.altova.com for more information and to see a Flash demo of MapForce in action.



MapForce is available separately or as part of the Altova MissionKit, the integrated suite of XML, database, and UML tools that includes eight products for less than the price of two.*

*Pricing comparison is edition-specific and based on Altova MissionKit vs. individual licenses XMLSpy and MapForce.